



Founded in 2000, Vanshika is a trusted name in real estate, earning the confidence of thousands of families over two decades. With over 10 lakh square feet of prime residential and commercial developments, our mission is clear: to build communities, not just homes.

At Vanshika, each project is thoughtfully crafted to foster a sense of belonging, blending authentic design with the insights we've gathered over the years to meet your unique needs and aspirations.

Our homes offer not just comfort and convenience, but a true community experience.

Vanshika's Nature's Harmony - Highlights



100%* vastu compliant homes



Balinese themed gardens



Hi-rise community living



60+ exclusive amenities



2min. to Metro Station

*Homes designed for
your
wellness and prosperity*



ॐ

सर्वेषां स्वस्तिस्त्रुभव ।
सर्वेषां शान्तिर्भव ।
सर्वेषां पूर्णभव ।
सर्वेषां मङ्गलंभव ।
ॐ शान्ति शान्ति शान्ति ॥



May there be Well-being for All,
May there be Peace for All,
May there be Fulfilment of All,
May there be Auspiciousness for All,
Om Shanti Shanti Shanti

Vanshika's Jivana Chakra

The Jivana Chakra (Wheel of Life), a concept that symbolizes the eternal balance and harmony between the eight most fundamental aspects of living. Attaining equilibrium between each aspect leads to holism, completeness, and absolute fulfillment.

Parisara - Environment

Kamadhenu ~ the Cow

Parisara refers to the right physical environment which acts as a crucial catalyst for our collective progress. In Hindu literature, the Cow is also considered the greatest giver of all.

Anuraaga - Romance

Shuka the Parrot

Anuraaga is said to be the mount of Kamadeva, the God of love, representing desire and passion. Often seen in pairs, the Parrot symbolizes the vivacious spirit of love.

Leela - Recreation

Mruga~ the Deer

Leela depicts play or recreation. It signifies the aspect of leisure and play in one's life. The inclusion of the Deer in the Chakra stresses on the importance of finding balance between work and recreation.

Sattva - Community

Kurma~ the Tortoise

Sattva represents active community life and nurturing bonds with friends and family. The Tortoise symbolizes long-term stability one gains from fostering strong relationships with loved ones.

Vikaasa - Growth

Gandabherunda~ the Two-Headed Eagle

Vikaasa symbolizes strength and growth, alluding to the ceaseless development and betterment of the self. The Gandabherunda, or similar forms, can often be seen in royal insignias of South India.

Aarthika - Wealth

Padma the Lotus

Aarthika represents opulence, wealth, and prosperity. In Hinduism, the Lotus is depicted as the seat of Lakshmi, the Goddess of abundance, and is one of the most popular motifs in South Indian design.

Praana - Health

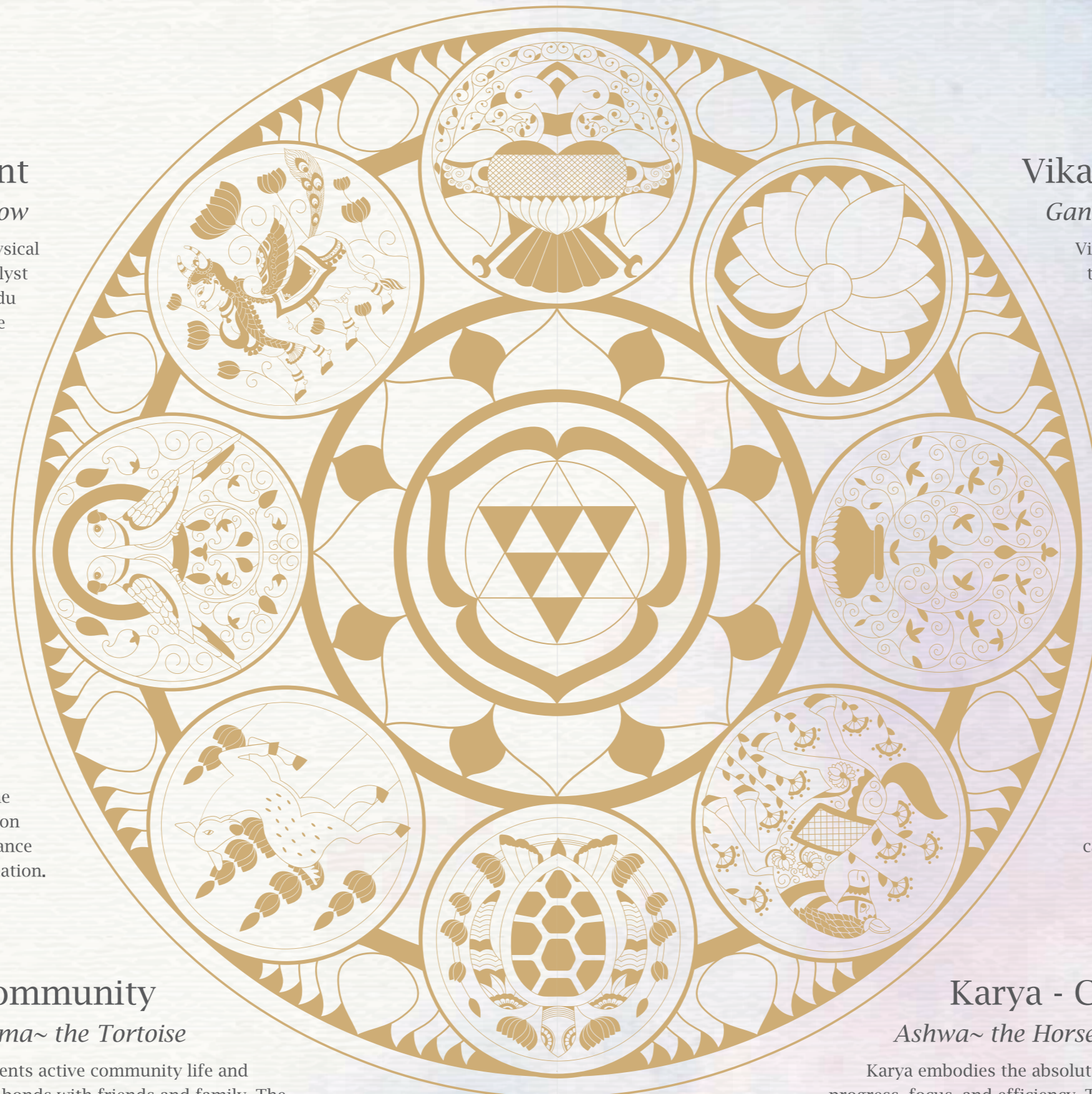
Sanjeevani ~ the All-Curing Herb

Praana symbolizes good health and healing. In Hindu mythology, the Sanjeevani herb is said to be capable of curing even the severest of ailments.

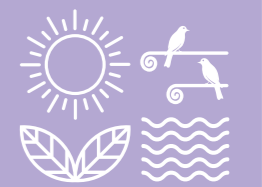
Karya - Career

Ashwa~ the Horse

Karya embodies the absolute power of progress, focus, and efficiency. Traits of the Horse have greater relevance in contemporary society, especially in one's work and career.



VANSHIKA'S



NATURE'S
HARMONY

Reviving Ancient Wisdom for a Meaningful Life

In today's fast-paced world, we often find ourselves disconnected from our true nature. Our constant chase for success and fulfillment leaves us busy but not truly content. However, the Vedas offer timeless wisdom that can help us rediscover a way of living that brings depth, wholeness, and purpose to our lives. By embracing these ancient teachings, we can unlock the path to a more profound and meaningful existence, grounded in the wisdom of our ancestors.

Adhering to Vastu Shastra



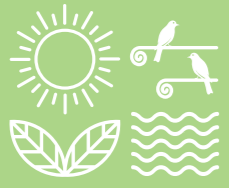
Creating Harmonious Living Spaces Through Vastu Shastra

Vastu Shastra is said to be the science of harmonizing spaces with the elements of nature to facilitate balance, prosperity, and well-being. Vastu Shastra is an intricate science that guides the design and construction of buildings in a way that harmonises the natural forces and divine energies. The principles of Vastu Shastra are meant to highlight the importance of different elements, directions, and spatial arrangements. To ensure a harmonious space for living, Vastu Shastra considers balancing the five elements of vastu or Panchabhutas, namely the earth, water, fire, air, and space. These elements influence the energy flow within an environment, thus developing spaces that promote harmony, prosperity, and energy. By harmonizing the five elements of Vastu Shastra, one can create living spaces that echo with the natural forces of the universe, facilitating balance and well-being for its natives.

The benefits of following the principles of Vastu Shastra are:

- By aligning and placing the elements properly as per Vastu principles, one can enhance the flow of positive energy and promote overall well-being.
- Vastu-compliant spaces help improve the relationships among family members and cultivate unity and cooperation.
- Another benefit of Vastu Shastra is that it attracts financial stability and prosperity when aligned with auspicious energies.
- Vastu-compliant buildings furnish natural light, ventilation, and proper space utilization, yielding better health, both physical and mental.
- Living in such a space helps reduce anxiety, stress, and conflicts, fostering emotional balance as well as peace of mind.

VANSHIKA'S



NATURE'S
HARMONY

DESIGN THAT
DELIGHTS YOU



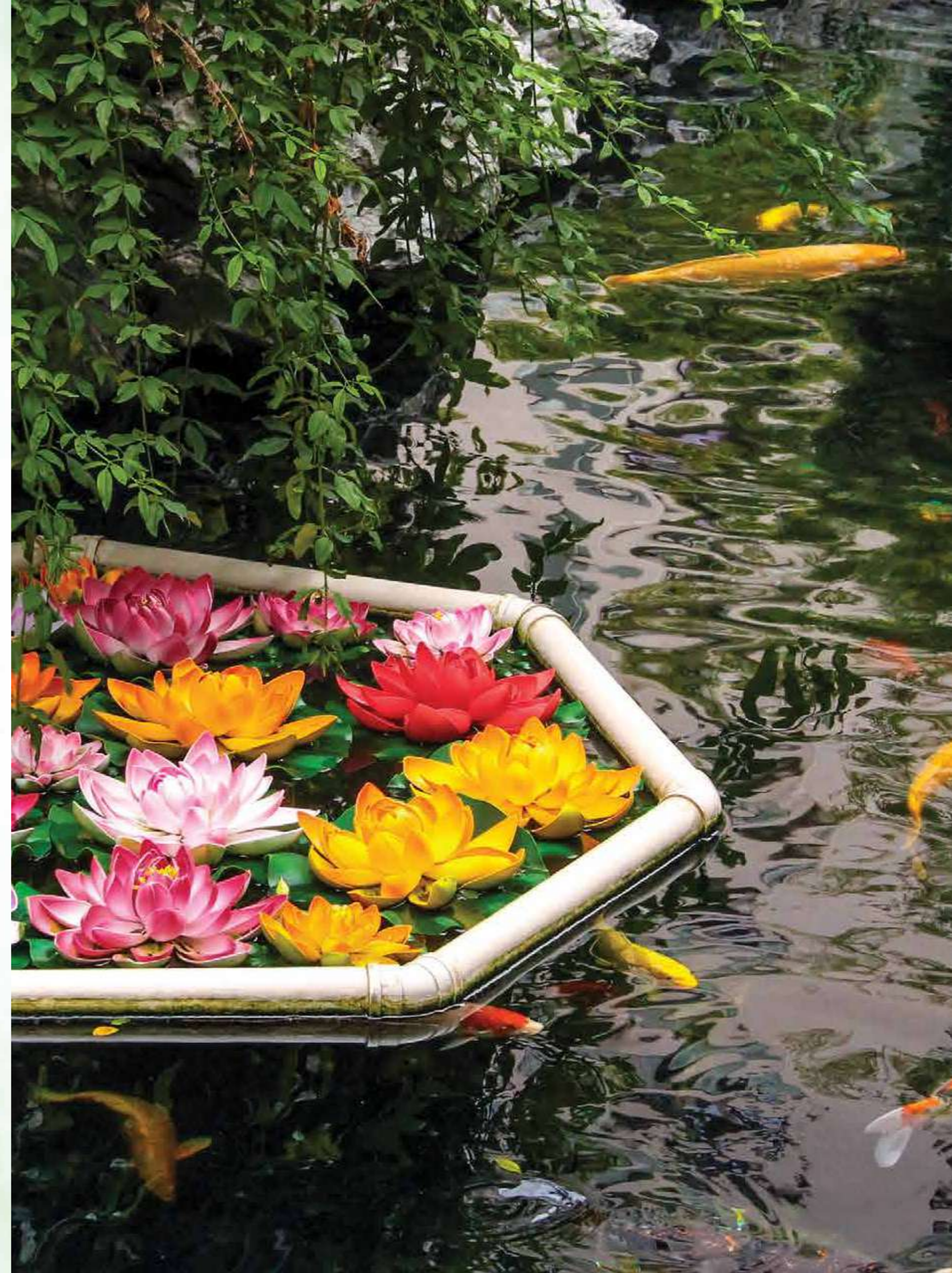
VANSHIKA'S NATURE'S HARMONY

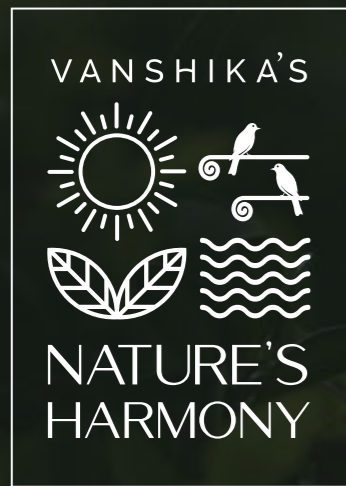




FIND YOUR
Haven In Harmony

Spread expansively over 4.25 acres, Nature's Harmony is a premium project for the discerning buyers. The project consists of 335 luxurious and vastu compliant apartments, with many unique features and blends seamlessly with nature.





60



EXCLUSIVE
AMENITIES



ENTERTAINMENT

- » Reception Lounge
- » Multipurpose Party hall
- » AV Room
- » Business centre
- » Convenience Store
- » Outdoor Cafeteria
- » Gym
- » Cross fit Corner
- » Boxing corner
- » Kids play area

KIDS FUN AND RECREATION

- » Indoor games room
- » Board games corner
- » Adventure wall
- » Kids ball pool
- » Video games room

FACILITIES

- » Association room
- » Laundry/Ironing shop
- » Electric Car charging Bay
- » Car Wash Bay
- » Air filling station.
- » Drivers/Maid dormitory
- » Drivers/ Maid Toilet

SWIMMING POOL

- » Swimming Pool
- » Kids Pool
- » Waterfall feature
- » Water play jets
- » Pool side lounges

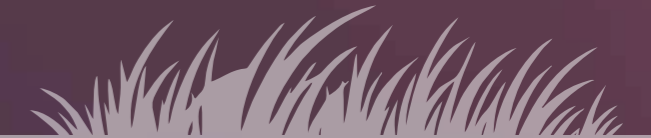
OUTDOOR AMENITIES

- » Dropoff Plaza
- » Amphitheatre
- » Half-Basketball court
- » Cricket Practice net
- » Futsal lawn
- » Outdoor gym
- » Outdoor Kids play area
- » Kids rock climbing
- » Bicycle racks with bicycles
- » Cycling track

- » Jogging track
- » Skating rink
- » Senior citizen court
- » Meditation lawn
- » Party deck
- » Barbeque corner
- » Hobby court
- » Interactive floor games
- » Play mounds
- » Inground Trampoline

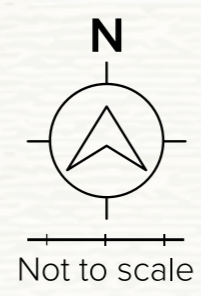
- » Sand pit
- » Pets park
- » Aroma Garden
- » Spillover party lawn
- » Shaded patio seating
- » Interactive water fountain
- » Plumeria court
- » Hammock Garden
- » Leisure seating court
- » Reflexology walkway

- » Tot lot
- » Jungle gym
- » Golf putting
- » Seating Pavilion
- » Zen Garden
- » Community Farming
- » Sculpture court
- » Informal seating area
- » Outdoor board games nook



Seamlessly Connected, Naturally Located.

Experience the ease of city living with direct access to Bangalore's metro lines, perfectly balanced with the tranquility of nature.





Connected to Convenience

5 MIN.

- Silk Institute Metro Station
- Talaghattapura Metro Station
- Jnana Sweekar Public School
- Yaashvi International School
- SMVN School
- Dmart, Vajarahalli

15 MIN.

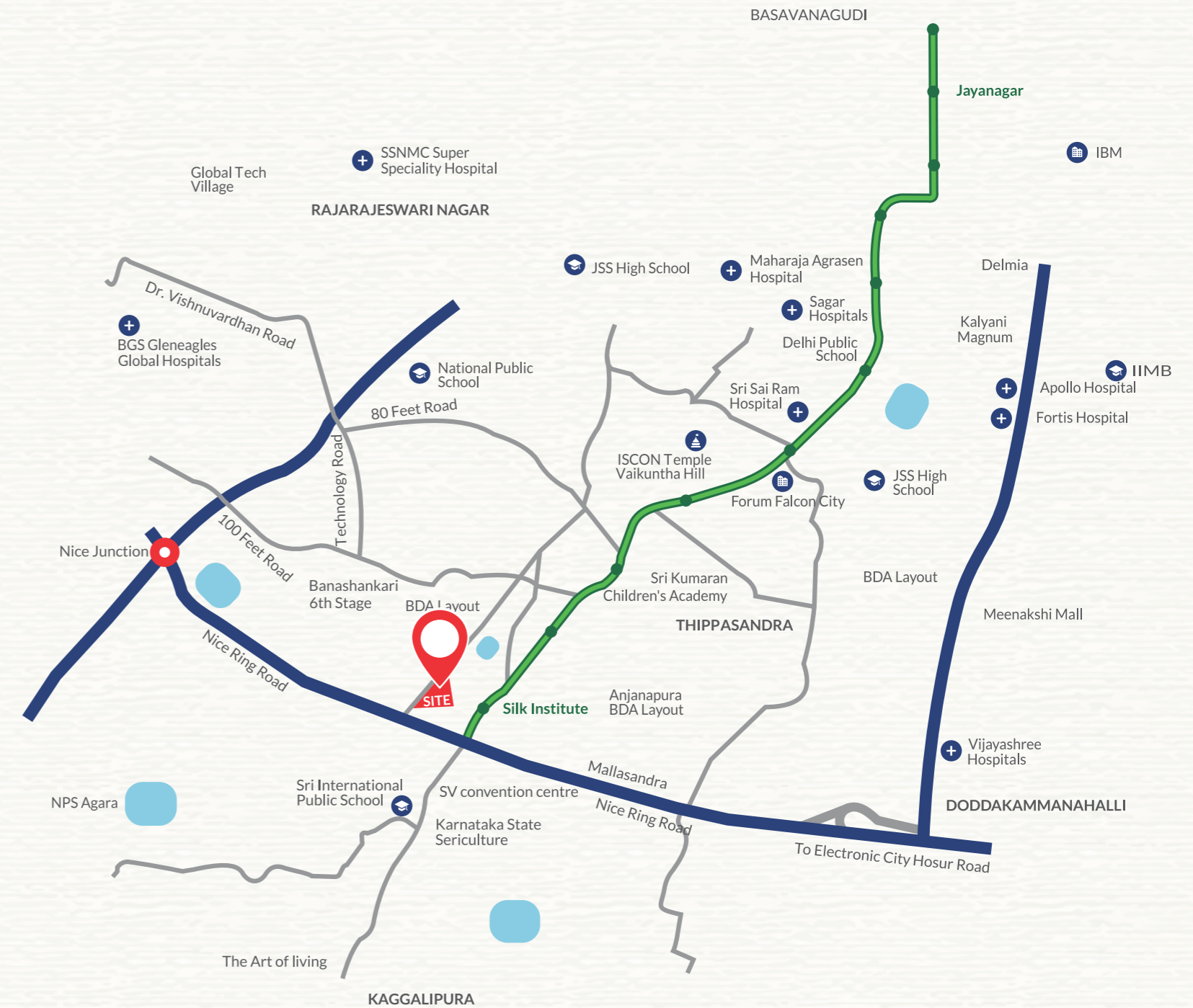
- Cura Hospital - Multispeciality Hospital
- JMRH & Research Centre
- BGS Gleneagles Global Hospital
- Sagar Hospital Kumaraswamy Layout
- Banashankari Bus Stand
- Sri Kumaran Public School -ICSE
- Global City Tech Park
- Hillside PU and Degree College
- KS School of Engineering and Management
- Forum Mall, Konankunte Cross Metro Station
- Metro Wholesale Kanakapura
- RNS Institute of Technology

1 HOUR

- KSR SBC Bengaluru Railway Station
- Orchids The International School
- Skalvi International School
- Loyola Composite PU College
- Dayananda Sagar College of Engineering

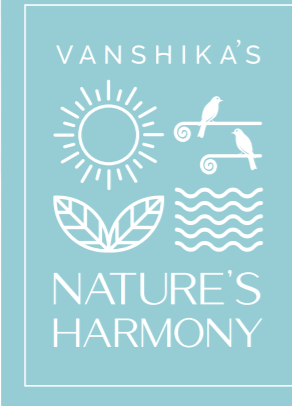


LOCATION MAP Not to Scale



Everything is Near You

Located on Kanakapura Road, in South Bengaluru, Nature's Harmony offers a curated community living that offers a serene and superior lifestyle in perfect harmony with need for a natural environment. Nature's Harmony is located in the high growth South Bengaluru. Being near by to Silk Institute Metro Station and Nice Road it is easily accessible from all parts of the city and places all necessary services within quick reach. Top educational institutions, major commercial hubs, high profile shopping and leisure centres, best healthcare facilities... everything you need is a short drive away.



A TOUCH OF BALI, RIGHT AT HOME.

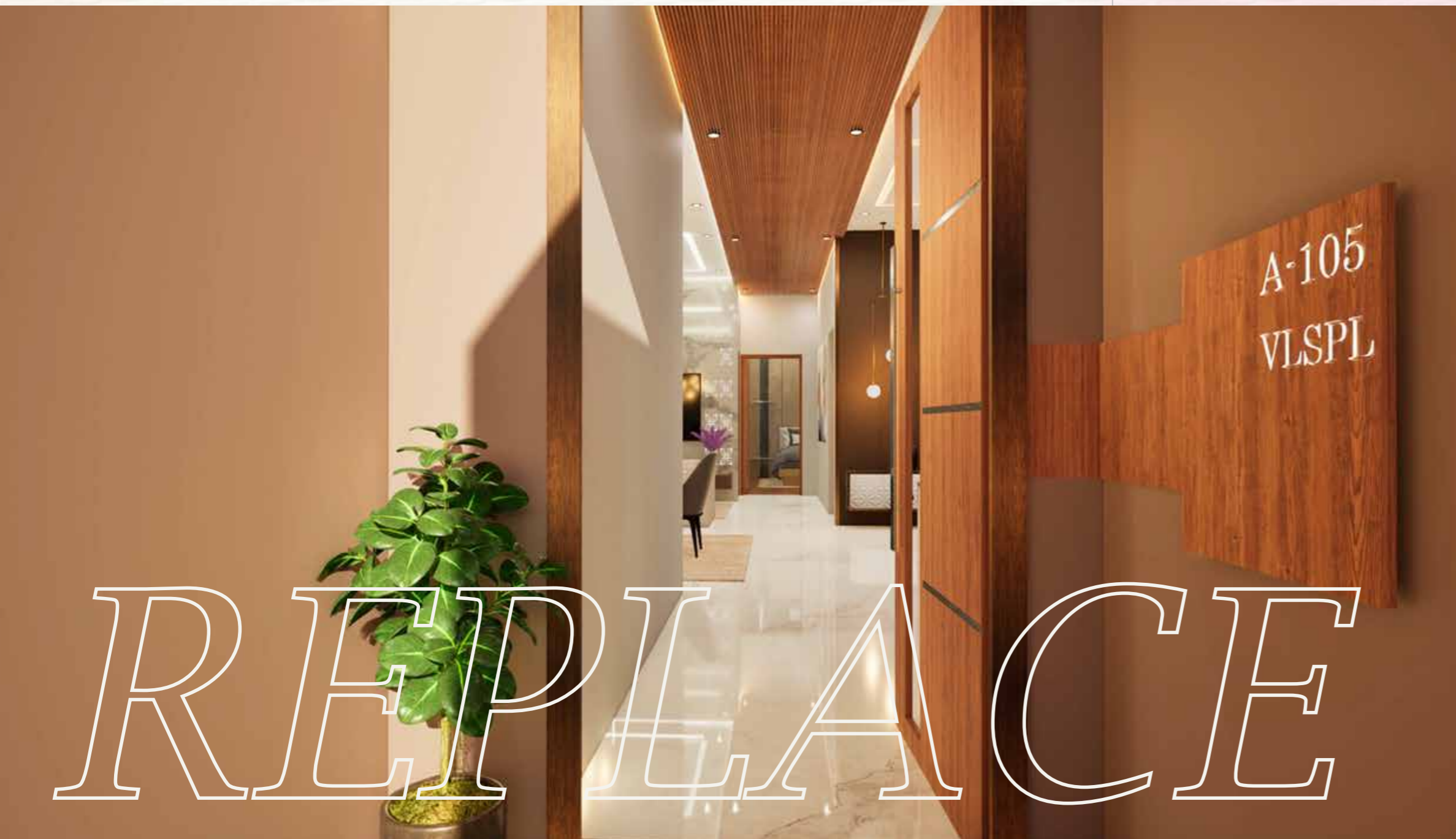
The Balinese-themed garden at Vanshika's Nature's Harmony offers a serene and tranquil escape amidst the bustle of urban life. Inspired by the lush landscapes of Bali, this garden is designed with an emphasis on harmony between nature and architecture. Featuring tropical plants, vibrant greenery, water features, and stone pathways, it creates a peaceful environment for relaxation and reflection.

A space where nature whispers and stories come alive. Under open skies, it becomes a stage for laughter, for quiet moments shared with loved ones, for the rhythm of life to unfold.

Here, every breeze carries a melody, every gathering becomes a memory etched in the soul. A place where the earth cradles your feet, and the heavens above watch over, inviting you to dream, to connect, and to belong.





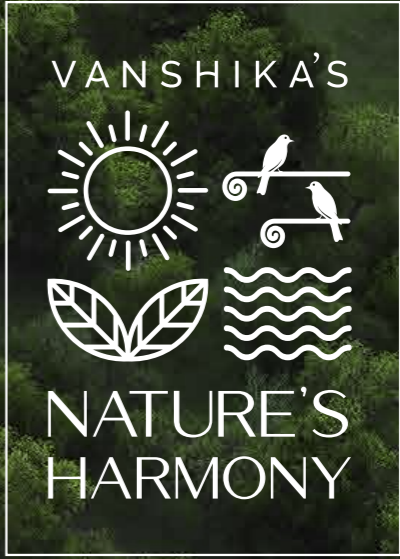


Apartments with the feel of Villa

We understand that most people are concerned with privacy in an Apartment. Keeping this in mind, apartments in Nature's Harmony are uniquely designed to give you the Villa feeling.

Each apartment has independent entry with separate steps giving you privacy and a unique feel to each apartment. To give you that expansive feeling of spaciousness, main doors are 8 feet in height and all windows are 7 feet 9 inches tall. Creatively planned square design ensures 100% utilisation of space.

All apartments are Vastu compliant and face East or North. The apartments are meticulously designed to maximise natural light and ventilation, and sensibly planned to make living a comfortable and convenient experience. The towers have also been positioned intelligently so as to provide every home with total privacy with less than 10% common walls.



ELEVATE YOUR
EVERY MOMENT

RETIACE

MASTER PLAN



LEGEND

- | | | | |
|-------------------------|---|-----------------------|-----------------------|
| ① Main Entry | ⑥ Sculpture Platform | ⑪ Kids Play Area | ⑯ Drop-off Plaza |
| ② Visitor's Car Parking | ⑦ Old Age Congregation Acu Pressure Walkway | ⑫ Kids Play Extension | ⑰ Cycling Track |
| ③ Amphitheatre | ⑧ Calisthenics | ⑬ Mini Amphitheater | ⑱ Jogging Track |
| ④ Half Basketball Court | ⑨ Skating Ring | ⑭ Water Body | ⑲ Basement Ramp Entry |
| ⑤ Aroma Garden | ⑩ Yoga/meditation Platform | ⑮ Seating Pavilions | ⑳ Basement Ramp Exit |



TYPE-1

1625 sft.
3 BHK
North Facing

DIMENSION

- 1: Foyer
1.90m X 1.75m
- 2: Living Room
7.40m X 3.65m
- 3: Family Bedroom
4.2m X 3.75m
- 3.1: Balcony
1.3m X 1.50m
- 4: Bedroom 2
3.73m X 3.40m
- 4.1: Balcony
3.79m X 1.0m
- 5: Bedroom 3
3.45m X 3.40m
- 6: Master Toilet
2.40m X 1.5m
- 7: Toilet2
1.51m X 2.40m
- 8: Toilet3
1.50m X 2.4m
- 9: Kitchen & Dining
3.04m X 2.25m
- 10: Transition
1.45m X 1.06M

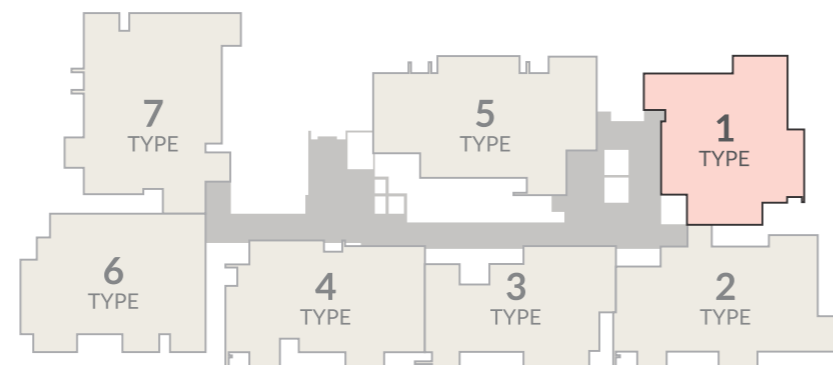


Designed with Vastu
Harmony for Every Corner

- Eshanya Moola
- East Facing Entrance
- Kubera Moola
- Agni Moola



Floor	Flat Type	Carpet Area (A)	Built up Area (B)	Saleable Area (D)*
ALL	3BHK	96.58 mtrs	12.35 mtrs	42.1



Dimension may vary slightly during construction | Furniture and fixtures are indicative only | All dimensions are in centimetres

TYPE-2

1917 sft.
3 BHK + Study
North Facing

DIMENSION

- 1: Foyer
1.90m X 2.7m
- 2: Living Room
3.65m X 7.60m
- 3: Family Bedroom
3.65m X 4.50m
- 3.1: Balcony
2.0m X 1.0m
- 4: Bedroom 2
4.00m X 3.19m
- 5: Bedroom 3
3.35m X 3.40m
- 6: Balcony
2.64m X 1.0m
- 6: Master Toilet
2.40m X 1.40m
- 7: Kitchen & Dining
3.51m X 2.40m
- 8: Toilet2
2.40m X 1.45m
- 9: Toilet3
2.40m X 1.50m
- 10: Transition
5.05m X 1.45M

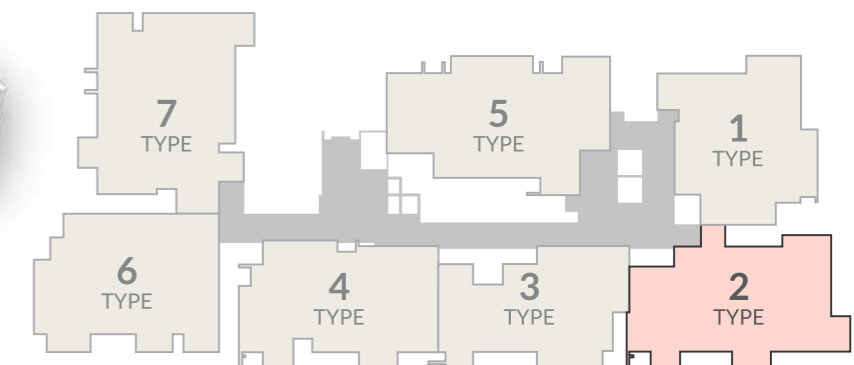


Designed with Vastu
Harmony for Every Corner

- Eshanya Moola
- East Facing Entrance
- Kubera Moola
- Agni Moola



Floor	Flat Type	Carpet Area (A)	Terrace Area (B)	Saleable Area (D)*
ALL	3BHK + Study	116.3 mtrs.	12.17 mtrs.	49.65 mtrs.



Dimension may vary slightly during construction | Furniture and fixtures are indicative only | All dimensions are in centimetres

TYPE-3

1497 sft.
3 BHK Comp.
East Facing

DIMENSION

- 1: Foyer 1.31m X 1.59m
- 2: Living Room 3.80m X 7.60m
- 3: Family Bedroom 3.60m X 4.65m
- 3.1: Balcony 1.80m X 1.0m
- 4: Bedroom 2 3.70m X 3.45m
- 5: Bedroom 3 2.75m X 2.90m
- 6: Balcony 2.50m X 1.0m
- 7: Master Toilet 2.40m X 1.50m
- 8: Kitchen & Dining 1.65m X 2.79m
- 9: Toilet2 2.40m X 1.50m
- 10: Transition 3.86m X 1.10M



Designed with Vastu
Harmony for Every Corner

- Eshanya Moola
- East Facing Entrance
- Kubera Moola
- Agni Moola



Floor	Flat Type	Carpet Area (A)	Terrace Area (B)	Saleable Area (D)*
ALL	3BHK Compact	89.06 mtrs.	11.26 mtrs.	38.77 mtrs.

TYPE-4

1786 sft.
3 BHK
North Facing

DIMENSION

- 1: Foyer 1.70m X 1.5m
- 2: Living Room 4.2m X 3.04m
- 3: Family Bedroom 3.80m X 4.56m
- 3.1: Balcony 2.0m X 1.0m
- 4: Bedroom 2 3.40m X 3.35m
- 5: Bedroom 3 3.65m X 3.30m
- 5.1: Balcony 2.64m X 1.0m
- 6: Master Toilet 2.40m X 1.45m
- 7: Kitchen & Dining 2.56m X 3.09m
- 8: Toilet2 1.44m X 2.40m
- 9: Toilet3 1.50m X 2.40m
- 10: Transition 5.16m X 1.05M



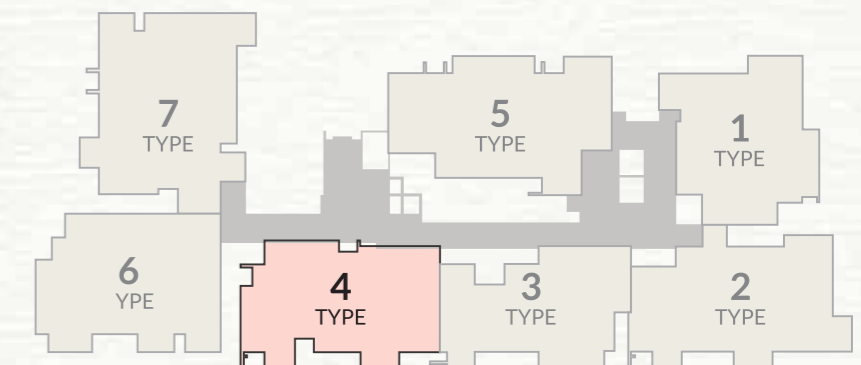
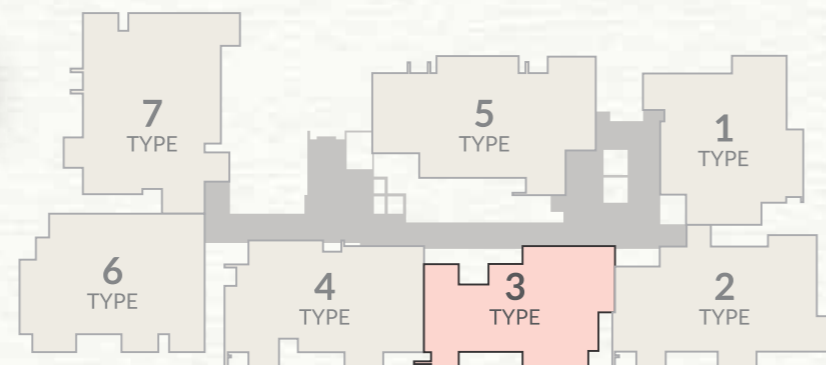
Designed with Vastu
Harmony for Every Corner

- Eshanya Moola
- East Facing Entrance
- Kubera Moola
- Agni Moola



Floor	Flat Type	Carpet Area (A)	Terrace Area (B)	Saleable Area (D)*
ALL	3BHK	96.58 mtrs	12.35 mtrs	42.1

*D = (A + B) x 1.35 + 75



Dimension may vary slightly during construction | Furniture and fixtures are indicative only | All dimensions are in centimetres

Dimension may vary slightly during construction | Furniture and fixtures are indicative only | All dimensions are in centimetres

TYPE-5

2011 sft.
3 BHK Luxury
East Facing

DIMENSION

- 1: Foyer 2.85m X 2.35m
- 2: Living Room 3.65m X 3.98m
- 3: Family Bedroom 4.11m X 3.50m
- 3.1: Balcony 1.65m X 1.50m
- 4: Bedroom 2 3.41m X 3.70m
- 4.1: Balcony 3.35m X 1.0m
- 5: Bedroom 3 3.45m X 3.82m
- 5.1: Balcony 5.96m X 1.0m
- 6: Kitchen & Dining 2.85m X 2.35m
- 7: Toilet1 2.3m X 1.50m
- 8: Toilet2 1.50m X 2.70m
- 9: Toilet3 1.50m X 2.40m



Designed with Vastu
Harmony for Every Corner

- Eshanya Moola
- East Facing Entrance
- Kubera Moola
- Agni Moola



Floor	Flat Type	Carpet Area (A)	Terrace Area (B)	Saleable Area (D)*
ALL	3BHK Luxury	113.48 mtrs.	21.3 mtrs.	52.09 mtrs.

TYPE-6

1846 sft.
3 BHK Luxury
East Facing

DIMENSION

- 1: Foyer 2.85m X 1.65m
- 2: Living Room 4.50m X 4.05m
- 3: Family Bedroom 4.1m X 3.60m
- 3.1: Balcony 3.1m X 1.2m
- 4: Bedroom 2 3.45m X 3.60m
- 5: Bedroom 3 3.45m X 3.45m
- 5.1: Balcony 1.5m X 1.65m
- 6: Balcony 2.55m X 1.2m
- 7: Kitchen & Dining 6.35m X 2.7m
- 8: Toilet1 2.4m X 1.5m
- 9: Toilet2 2.4m X 1.45m
- 10: Toilet2 1.45m X 2.55m
- 11: Transition 6.85m X 1.35m

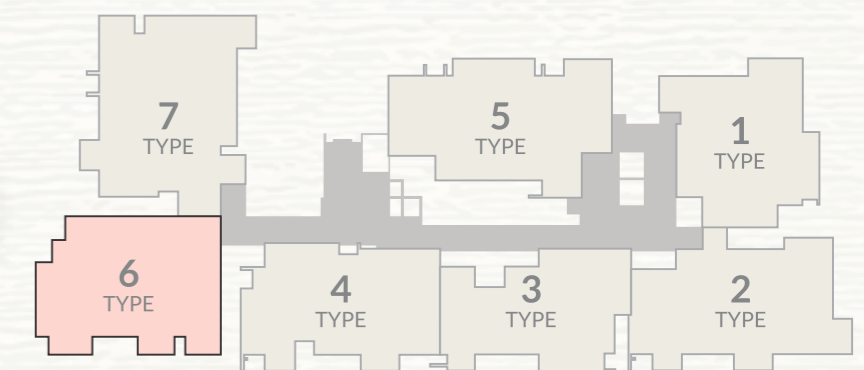
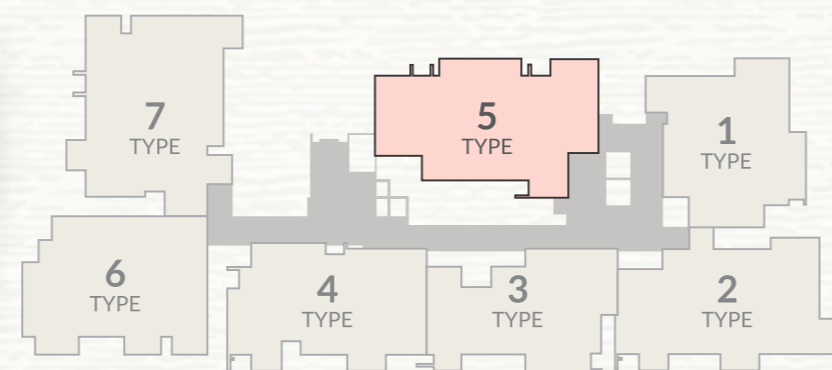


Designed with Vastu
Harmony for Every Corner

- Eshanya Moola
- East Facing Entrance
- Kubera Moola
- Agni Moola



Floor	Flat Type	Carpet Area (A)	Terrace Area (B)	Saleable Area (D)*
ALL	3BHK Luxury	113.48 mtrs.	21.3 mtrs.	52.09 mtrs.



TYPE-7

2088 sft.
4 BHK
East Facing

DIMENSION

- 1: Foyer
1.5m X 1.7m
- 2: Living Room
4.55m X 4.45m
- 3: Family Bedroom
4.10m X 3.90m
- 3.1: Balcony
1.4m X 2.1m
- 4: Bedroom 2
4.1m x 3.35m
- 5: Bedroom 3
3.50m X 3.90m
- 5.1: Balcony
1.4m X 2.0m
- 6: Toilet
1.5m X 2.4m
- 7: Kitchen & Dining
6.35m X 2.7m
- 8: Toilet
2.4m X 1.45m
- 9: Transition
5.05m X 1.45M



Designed with Vastu
Harmony for Every Corner

- Eshanya Moola
- East Facing Entrance
- Kubera Moola
- Agni Moola



Floor	Flat Type	Carpet Area (A)	Terrace Area (B)	Saleable Area (D)*
ALL	3BHK	2088	-	-

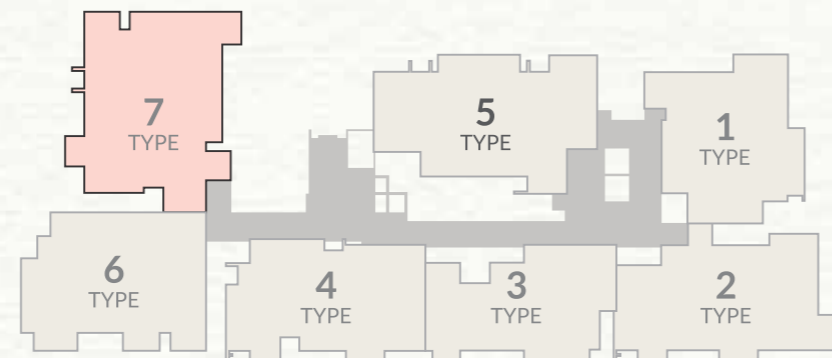
*Penthouses That
Reflect Elegance and Grandeur*

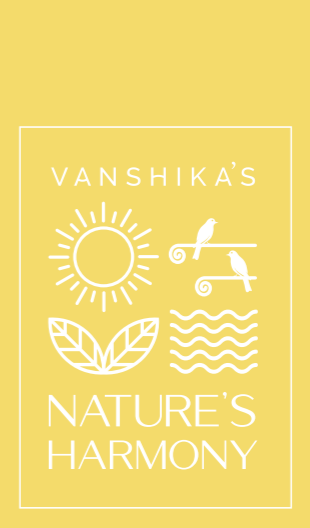
'D' Block

D-901	3269.13
D-902	3696
D-903	2984
D-904	3392
D-905	3880

'E' Block

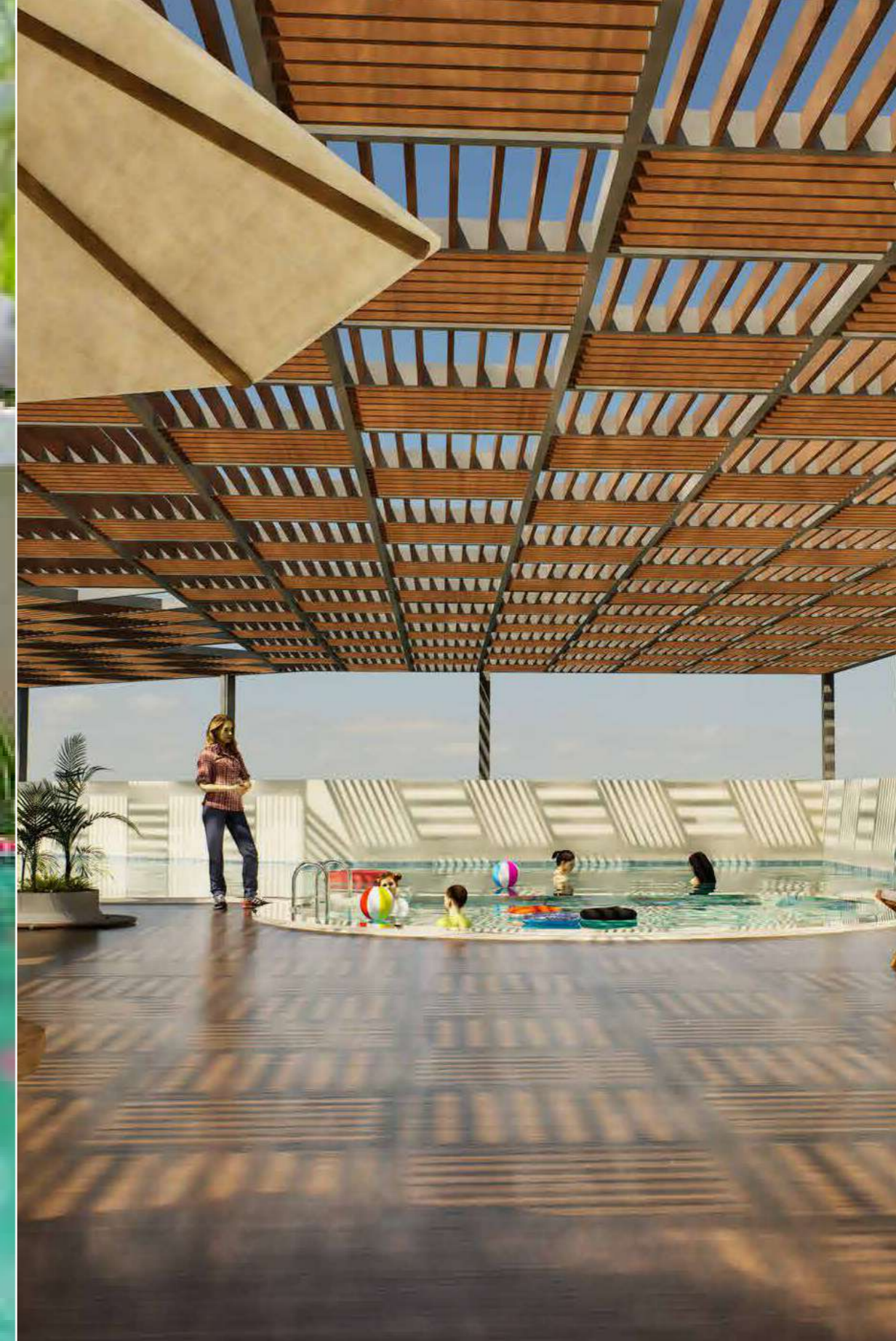
E-901	3269.13
E-902	3696
E-903	2984
E-904	3392
E-905	3880



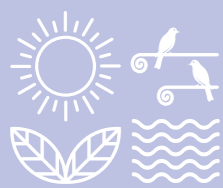


WHERE LUXURY
MEETS LEISURE





VANSHIKA'S



NATURE'S
HARMONY

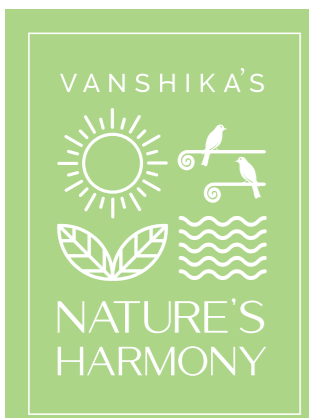
Luxury of Refreshing Escape

Immerse yourself in a refreshing oasis, where the sparkling water invites relaxation and rejuvenation. The swimming pool offers a perfect blend of luxury and tranquility, transforming every swim into a moment of pure escape.



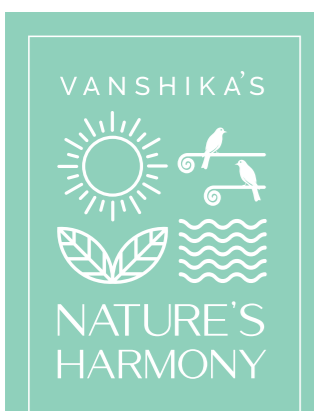
Luxury of Wellness and Community

Step into a space that nurtures both body and mind, where wellness meets community in perfect harmony. From energizing workouts to inspiring gatherings, these club amenities are designed for connection, growth, and a lifestyle of balanced well-being.



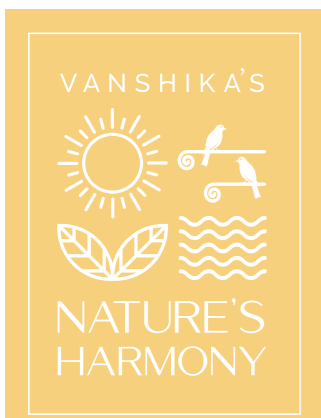
Luxury of Leisure and Play

Indulge in spaces crafted for enjoyment, where every game and gathering brings excitement to life. Whether it's a spirited match on the court, a game of skill, or a movie night with friends, these amenities turn leisure into a luxurious experience.



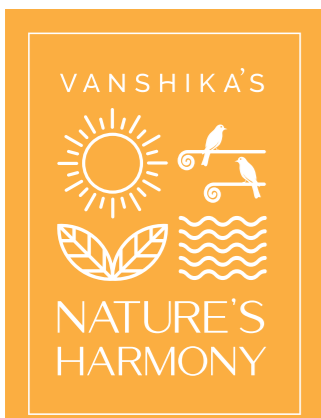
Luxury of Spacious Elegance

Step into a space where elegance meets comfort, where each corner flows effortlessly into the next. The dining area invites cherished gatherings, while the living room offers a sanctuary of calm. Every detail, from the spacious layout to the refined finishes, is designed to elevate your everyday moments into pure luxury.



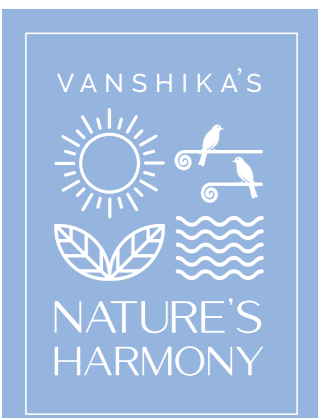
Luxury of Open-Concept Living

Experience the seamless flow of open-concept living, where the kitchen and living room blend in perfect harmony. Here, every meal, conversation, and moment is shared effortlessly, creating a warm and inviting heart to your home. Designed for connection and comfort, this space is crafted to inspire life's most memorable gatherings.



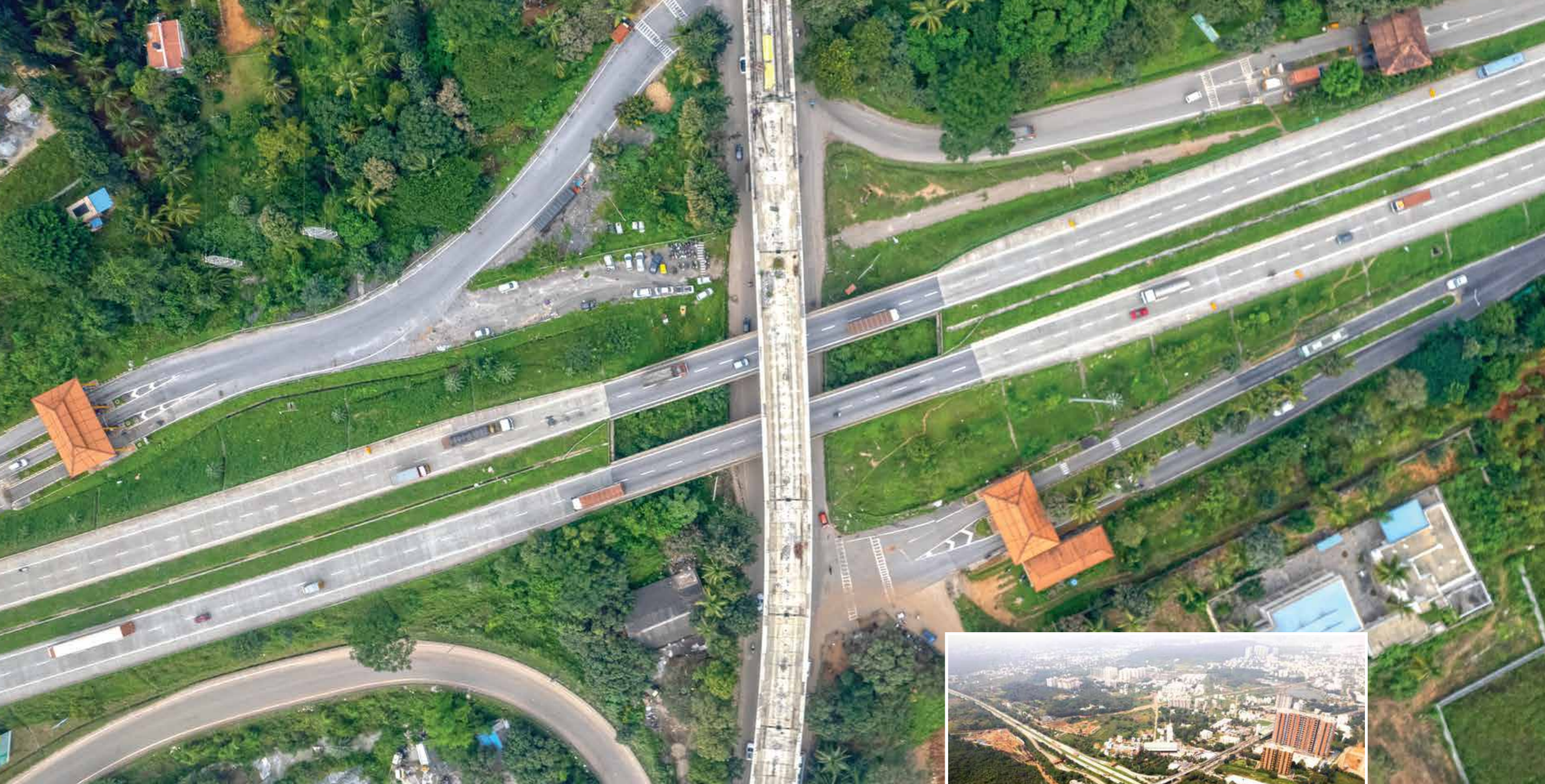
Luxury of Serene Strolls

Experience the soothing charm of pathways crafted for calm, where each step leads you through nature's gentle embrace. Surrounded by greenery, these serene trails offer a quiet retreat, making every walk a peaceful escape right at your doorstep.



Luxury of Playful Freedom

A place where laughter echoes and imagination takes flight, the children's play area offers boundless freedom in a safe, vibrant setting. Designed to spark joy and adventure, it's a space where little ones can explore, create, and grow. Here, every moment is a treasured part of childhood.



Luxury of Prime Connectivity

Discover a location that brings the world to your doorstep, where every convenience lies just moments away. Set in a well-connected neighborhood, this address combines tranquility with accessibility, offering the perfect balance of city life and serene retreat. Here, luxury is not just within—it's all around you.

Crafted to Perfection, Built for Harmony

Explore thoughtfully designed specifications that bring comfort, quality, and a touch of nature into every corner of your home.



STRUCTURE

- Structural System: RCC Framed Structure Designed for seismic compliant (Zone 2)
- Masonry : 200mm for external walls & 100mm for Internal walls
- Floor: Floor height (incl. slab) : Will be maintained at 3000mm
- ATT: Anti-termite treatment will be done



WALL FINISH

- Internal walls: Finished with 2 coats of putty, 1 coat of primer & 2 coats of emulsion
- Ceiling: Finished with 2 coats of putty, 1 coat of primer & 2 coats of emulsion
- Exterior walls: Finished with 1 coat of primer & 2 coats of exterior emulsion paint with color as per architect's design intent
- Bathroom: Ceramic Tile up to false ceiling height of size 300x600mm & above false ceiling will be finished with a coat of primer
- Kitchen: Ceramic wall tile of size 600x600mm for a height of 600mm above the counter top finished level
- Toilet Ceiling: Grid type false ceiling



FLOOR FINISH WITH SKIRTING

- Main Flooring: Vitrified tiles of size 600mm x 1200mm
- Bathroom: Anti-skid ceramic tiles of size 300mm x 300mm
- Balcony: Anti-skid ceramic tiles of size 600mm x 600mm
- Private open terrace (if applicable): Pressed tiles finish



KITCHEN & DINING

- Kitchen: Platform will be finished with granite slab of 600mm wide at height of 850mm from the finished floor level.
- Electrical point: For chimney, hob & water purifier
- CP fitting: Kohler/American standard/ Equivalent
- Sink: Single bowl SS sink with drainboard
- Dining: Counter top washbasin will be provided wherever applicable



BALCONY

- Handrail: MS handrail as per architect's design
- Cloth Drying Provision: Provided in balcony



BATHROOMS

- CP fittings & sanitary fixture: Kohler/American standard/ Equivalent
- All Bathrooms: Wall mounted WC with ostern, Health faucet, Single lever diverter, Rain shower with a counter top wash basin



WINDOWS

- Windows : Aluminum windows with sliding shutters & plain glass
- French doors : Aluminum doors with sliding shutters & toughened glass
- Ventilators : Aluminum ventilators of fixed/open-able shutter for ODU access (wherever applicable)



JOINERY DOORS

- Main door: Good quality door of size 1050 x 2100mm with veneer finish and designer shutter.
- Ironmongeries like Digital Door lock of Yole or equivalent, tower bolts, door viewer, safety latch, magnetic door catcher, etc.
- Bedroom doors : Good quality door of size 900 x 2100mm with laminate finish. Ironmongeries like Godrej or equivalent lock, door stopper, door bush, tower bolt, etc
- Bathroom doors : Good quality door of size 900 x 2100mm with laminate finish. Ironmongeries like Godrej or equivalent lock, door stopper, door bush, tower bolt, etc



ELECTRICAL POINTS

- Power Supply: Single Phase power supply. connection for 2BHK .
- Three phase power supply connection for 3BHK
- Safety device: RCCB (Residual Current Circuit breaker)
- Switches & sockets: Modular box, modular switches & sockets of good quality is brand
- Wires: Fire Retardant Low Smoke (FRLS) copper wire of good quality is brand
- TV: Point in Living & one of the bedrooms
- Data & USB: Point in Living
- Split-air conditioner: Points in Living and one of the bedrooms Provision in other bedrooms
- Foot Lamp: Provision in all bedrooms
- Exhaust fan: Point in all bathrooms
- Geyser: Point in one of the bathrooms and Provision in others bath- rooms
- Back-up: 400W for 2BHK & 500W for 3BHK



COMMON FEATURES

- Lift : Elevators of 10 passengers automatic lift will be provided
- Back-up : 100% Power backup for common amenities such as Clubhouse, Lifts, STP, WTP 6
- selective common area lighting
- Owner's Directory : Apartment owner. name will be provided in ground Level
- Lift fascia : Granite/equivalent cladding
- Lift Lobby : Granite flooring @ ground level
- Staircase floor : Granite flooring
- Staircase handrail : MS handrail with enamel point finish
- Terrace floor : Pressed the flooring
- Terrace doors : Good quality FRP door of size 900x2100mm with point finish Ironmongeries like
- thumb tum lock of Godrej/equivalent without key, door bush automatic door closer, etc..



OUTDOOR FEATURES

- Water storage : Centralized UG sump with WTP (Min requirement water test report)
- Rain water harvesting : Rain water harvesting system as per site requirements
- STP : Centralized Sewage Treatment plant
- Safety : CCTV surveillance cameras will be provided all round the building at pivotal
- locations in ground level
- Walkway : Walkway spaces well defined as per landscape's design intent
- Security : Security booth will be provided at the entrance
- Compound Wall : Site perimeter fenced by compound wall with entry gates
- Landscape : Suitable landscape of appropriate places in the project as per design intent
- Driveway : Convex mirror for safe turning in driveway in/out
- External Driveway : Interlocking paver block/ equivalent flooring with demarcated driveway as per
- landscape's design intent

Trusted Brands,
Unmatched Quality



Panasonic



Creating Harmonious Living Spaces
Through Vastu Shastra

VARSHA + SRIRAJ

architecture + interiors + urbandesign

We are constantly open-minded and flexible to new concepts rather than pre-conceived notions that rule our creative world.



30 years experience in the consultancy field. Design of structures ranging from a simple beam slab structure to complicated structures like shells & domes.



We at LEAD promise and dedicate ourselves to deliver the very best possible design solutions for the benefit of the occupants bringing out maximum sustainability.



VEPL team along with committed long term associates is able to generate project solutions at rapid speed.



In 1972, Dr. P Mohamed Ali co-founded GALFAR, Oman's first private construction engineering company, which he grew into the country's largest listed construction company with extensive capabilities in infrastructure, oil & gas, and other domains. MFAR, headquartered in Bengaluru, India, now benefits from Dr. Ali's expertise, overseeing multiple group companies with a significant presence across India and South Asia.



VANSHIKA

LIFESPACES

Registered Office

No. 408/B, 13th Main, 24th Cross,
BSK II Stage, Bengaluru 560070, KA



Corporate Office

Survey 12/4B, VISL Layout,
Talaghattapura, Bengaluru 560109, KA

WWW.VLSP.IN

For Enquiries: **Email:** sales@vlsp.in
Call: 9964249000 / 9964259000

RERA No.: PRM/KA/RERA/1251/310/PR/121124/007226

BBMP No.: BBMP/ADDL.DIV/JDSOUTH/0068/23-24

Disclaimer: All representations of interiors, furnishings, and fixtures shown are purely conceptual and are not part of the actual home. Images featured in marketing materials such as brochures, walkthroughs, and sales kits may include stock photos or off-site imagery and are intended to showcase a potential lifestyle. The drawings and illustrations are for representational purposes only and not actual depictions. The floor plans and designs are subject to modification based on approvals from state authorities, BMICAPA, RERA, and other local bodies. Buyers are encouraged to visit the Urbanrise sales office to review floor plans and other details before making a purchase decision. This brochure is for conceptual purposes only and does not constitute a legally binding document. The visuals should not be interpreted as factual representations or as forming part of any legal agreement or contract.