

# LIMITLESS LUXURY



A LUXURY DEVELOPMENT BY





---

Accomplishments  
that speak louder than words

---

An entrepreneur whose pursuit  
of the perfect home changed  
Bengaluru's Real Estate Market.



"Necessity is the mother of Invention". Ram Goniguntla is an Inventor by heart, who, has always sought to fill the gaps of society. This techie from Bengaluru began his rise in the IT industry over two decades ago and created a fruitful career for himself. He held various key positions for tech giants and he quickly rose through the ranks to make a name for himself.

The Indian dream of owning a home, was one that Ram also harbored. His search for the perfect home was carried out with maximum fervour and determination, but, was met with disappointment. Ram found apartments to be inadequate in several ways as they were cramped, poorly ventilated, dimly lit and lacked the right amenities. His search was truly thorough but his goal of luxury apartments that fit his wishlist didn't exist within reasonable budgets. And thus, Ram found a life-changing necessity.

Thus, Ruchira was born in the year 2013. Mr Ram Goniguntla, Chairman and Managing Director, wanted not to just build homes, but, also offer an unparalleled lifestyle and creating holistic communities. Eight years later, after successfully completing Four projects and loaded with immense learning, we are proud to introduce our Fifth creation, Park East by Ruchira

“

Park East is conceptualized with a lot of love and thought process. We wanted to create homes that carry the signature style of Ruchira, encompassing quality in a premium life style, and yet is unique. Every home is well planned to make life comfortable, so that you make Park East your address. Blissfully happy families staying in a Ruchira home is our reward.

”

– Ram Goniguntla  
Chairman and Managing Director



---

The one is for you  
overlooking Whitefield, Bengaluru

---

284 PREMIUM HOMES

2 MAJESTIC TOWERS

EACH TOWER 24 FLOORS

3.37 ACRES OF LAND

2 BASEMENTS & GROUND FLOOR

18,000 SFT CLUBHOUSE

AN EXCLUSIVE CLUBHOUSE WITH  
AN ELEVATED INFINITY EDGE POOL

SEAMLESS CONNECTIVITY TO  
THE AIRPORT AND BUSINESS DISTRICTS

DOUBLE HEIGHT AIR-CONDITIONED LOBBY

EXCELLENT LOCATION & CONNECTIVITY

park  
east  
By Ruchira





# A WORLD OF ITS OWN





Our drive and dedication to offer spacious cozy homes have culminated in our passion for creating wholesome communities. Every community we develop is a fruit of intense labour, planned with meticulous detailing, well-thought-out floor plans, and easy accessibility. As a part of this legacy our Chapter Five, the "Park East" has amenities for every age group - from toddlers to seniors. This community is strategically located in Kannamangala, Whitefield, Bengaluru.



# WHY PARK EAST?

## THE DIFFERENTIATORS

### SPACIOUS HOMES WITH OPTIMUM SPACE UTILISATION

Majestic bedrooms  
Walk-in wardrobe provision  
Alcove seating area  
Large balconies

### THOUGHTFULLY DESIGNED

Thoughtfully designed green spaces to address overall well-being of the Residents 73% open space

### REJUVENATING BREEZE

and eye-soothing scenery of the lush 70 acres of Mini Lalbagh.

### AMPLE LIGHT AND VENTILATION

in every corner of your home

### CONGLOMERATE TYPES

of Homes to cater to your specific requirements

### LINEAR GRID & NO COMMON WALLS

More privacy  
Better view

### STRATEGIC LOCATION

With facilities and services, in and around the neighbourhood

### A SIGNATURE CLUBHOUSE

loaded with amenities catering to the needs of toddlers to seniors

### UNMATCHED SPECIFICATIONS

taking into account minute details.



Spacious homes are the need of the market today. Our units are engineered keeping in mind the current demands and trends, tailored to suit every requirement. As you enter Park East, a tranquil environ, rejuvenating breeze, birds chirping and luscious greenery greet you. Each unit is a sanctuary of privacy, letting you enjoy the quiet of the surroundings. The scale and detailing of each apartment, made to complement your lifestyle and crafted to your liking.

park  
east  
By Ruchira

DESIGN PHILOSOPHY





True to its name, Park East by Ruchira is the jewel of East Bengaluru. We have mirrored nature, in our cozily crafted spaces to give you a perfect setting away from the hustle and bustle of the city. The name and vision are aligned with one another to create this unique and modern living experience and usher in a new life, to be lived to the fullest.

park  
east  
By Ruchira

DRIVEN BY AN IDEA





In a fast-paced world, mental health often tends to take a back seat. Pre-pandemic, people have forgotten how to enjoy the bounty of nature. The amenities at Park East are designed to offer holistic well-being for everyone. The landscape is meticulously designed to offer a perfect setting for outdoor activities - be it exercise, leisure or even work. Loose your devices, soak in the canopy of trees. Relax, revitalize and rejuvenate yourself with options such as Jogging track, Outdoor workstation, Multipurpose play court and Floral gardens.

park  
east  
By Ruchira

LANDSCAPE PHILOSOPHY





# WHY THIS LOCATION?

Whitefield is a magnet for retail development in Bengaluru. Affluent Individuals and ambitious businesses are all moving towards Whitefield. Park East represents this luxury lifestyle for our Home Owners. Your commute to work is likely to go short and sweet from our location and the weekend outings will feel as easy as they should.

## EDUCATIONAL INSTITUTIONS

- |                        |          |  |           |
|------------------------|----------|--|-----------|
| ○ Jain Heritage School | : 0.1 Km | ○ New Baldwin International Residential School | : 7.4 Km  |
| ○ NPS Whitefield       | : 5.7 Km | ○ Silver Oak International School              | : 2.9 Km  |
| ○ NPS ITPL             | : 2.9 Km | ○ Valistus International School                | : 3.9 Km  |
| ○ Chrysalis High       | : 2.5 Km | ○ M V J College                                | : 7.7 Km  |
| ○ Vagdevi Vilas School | : 2.5 Km | ○ Garden City University                       | : 10.3 Km |

## ENTERTAINMENT

- |                        |          |                             |          |
|------------------------|----------|-----------------------------|----------|
| ○ Inox                 | : 2.6 Km | ○ Decathlon                 | : 4.1 Km |
| ○ Red Rhino Restaurant | : 2.5 Km | ○ Orion Uptown Mall         | : 3.2 Km |
| ○ Rolla Hyper Market   | : 3.1 Km | ○ Nexus Whitefield          | : 9.4 Km |
|                        |          | The Forum Neighbourhood Mal |          |

## HOSPITALS

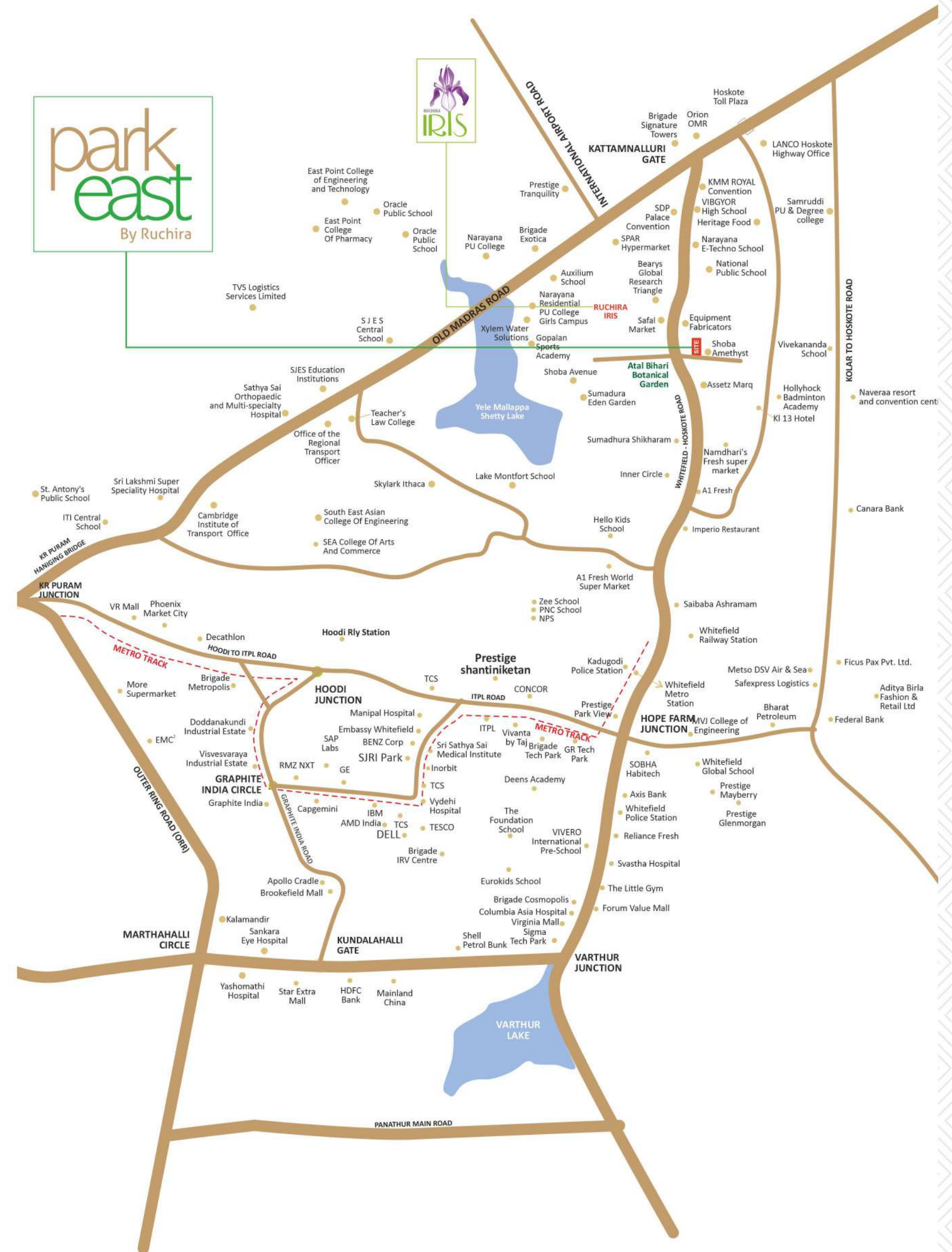
- |                                   |           |                            |          |
|-----------------------------------|-----------|----------------------------|----------|
| ○ Axis Hospital                   | : 4.5 Km  | ○ East Point Hospital      | : 7.7 Km |
| ○ Miracle Hospital                | : 3.6 Km  | ○ Svastha Hospital         | : 8.7 Km |
| ○ Aster Women & Children Hospital | : 9.6 Km  | ○ Manipal Hospital ITPL    | : 9.3 Km |
| ○ Vydehi Hospital                 | : 10.8 Km | ○ Manipal Hospital Varthur | : 9.2 Km |
| ○ Cloudnine Hospital              | : 9 Km    |                            |          |

## IT PARKS

- |                            |           |                           |           |
|----------------------------|-----------|---------------------------|-----------|
| ○ BGRT                     | : 2.4 Km  | ○ RMZ Infinity            | : 16.8 Km |
| ○ ITPL                     | : 7.09 Km | ○ Bagmane Business Center | : 19.2 Km |
| ○ Brigade Signature Towers | : 3.1 Km  |                           |           |

## TRANSPORT HUB

- |                             |           |                              |          |
|-----------------------------|-----------|------------------------------|----------|
| ○ Airport                   | : 28.7 Km | ○ Whitefield Railway Station | : 5.1 Km |
| ○ K R Puram Railway Station | : 13.9 Km | ○ Whitefield Metro Station   | : 6 Km   |





## HOME TYPES

---

Just as poetry has the power to transform the meaning of words, at Ruchira Projects we aim to add a new definition to the way living spaces are perceived. This is why we have chosen poetry theme to describe our homes.

### HOME HALLMARKS

Lavish living spaces with abundant sunlight and minimal space wastage

Sprawling sundecks with sweeping views of the Bengaluru skyline

Entry foyer in all residences offering privacy

6 feet height windows offering abundance of natural light

Air conditioning provision with dedicated space for A/C outdoor unit in shaft area

Seamless floor finishes with premium 800mm X 1200mm vitrified tiles from top in line brands

Toilet fixtures from premium brands of Grohe, Kohler or equivalent with 600mm X 600mm floor tiles and 600mm X 1200mm dadoing tiles

Premium laminated wooden flooring in master bedroom with private balconies

Home automation with lighting controls and biometric lock with integrated door phone

### BALLAD HOME

2 BEDROOM HOMES  
1300 TO 1352 SQFT

A Ballad is a poem that tells a story similar to a folk tale or legend and often has a repeated refrain. The second and fourth lines of each verse rhyme.

### SONNET HOME

3 BEDROOM HOMES  
1601 TO 1644 SQFT

A Sonnet is fourteen line poem with a strict rhyme scheme and specific structure.

### VILLANELLE HOME

3 BEDROOM HOMES LARGE  
1758 TO 1796 SQFT

A Villanelle is a poem of nineteen lines, and which follows a strict form that consists of five tercets (three-line stanzas) followed by one quatrain (four-line stanza).

### EPIC HOME

3.5 BEDROOM HOMES  
2166 SQFT

An Epic poem is a long, often book-length, narrative in verse form that retells the heroic journey of a single person or a group of persons.



# MASTER PLAN



## LEGEND

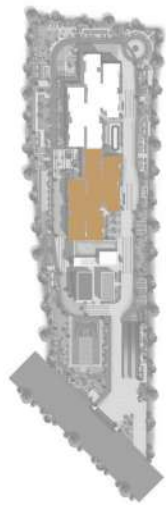
- |   |   |                              |                                      |
|---|---|------------------------------|--------------------------------------|
| 1   ENTRANCE FEATURE WALL WITH PLANTING                                     | 7   KID'S PLAY AREA (7 - 12Y)               | 13   ELDERS ZONE             | 20   SKATING RINK                    |
| 2   DRIBBLE COURT   | 8   OUTDOOR PARTY ZONE                      | 14   FLEXI - WORK CHILL ZONE | 21   SUPERMARKET SPILLOVER ZONE      |
| 3   INFORMAL AMPHITHEATRE   | 9   CRICKET PITCH                           | 15   PARK UNDER RAIN TREE    | 22   VISITORS PARKING                |
| 4   MULTIPURPOSE LAWN WITH YOGA / PARTY/ INFORMAL CAF / CHILDRENS PLAY AREA | 10   CHIT CHAT ZONE                         | 16   PET PARK                | 23   TREE COURT WITH SWING PARK      |
| 5   SEATING UNDER ACCENT TREES  | 11   FLOOR GAMES ON EPMD / STAMPED CONCRETE | 17   NEEM GROVE COURT        | 24   PERGOLA WITH CLIMBERS OVER RAMP |
| 6   KID'S PLAY AREA (3 - 6Y)  | 12   BLOCK ENTRY PERGOLA WITH SEATING       | 18   CYCLE STAND             | 25   JOGGING/ WALKING TRACK          |
|   |   | 19   GARDEN                  | 26   CYCLING TRACK                   |

FEEL IMMERSED  
IN ABSOLUTE  
PRIVACY AND  
ELITE EXCLUSIVITY



## TYPICAL FLOOR PLAN TOWER PEONY

NO	TYPE	CONFIGURATION	SBA	CARPET AREA
1	EPIC	3.5 BEDROOM	2166	1511
2	VILLANELLE	3 BEDROOM LARGE	1760	1222
3	BALLAD	2 BEDROOM	1300	892
4	SONNET	3 BEDROOM	1602	1115
5	SONNET	3 BEDROOM	1601	1115
6	VILLANELLE	3 BEDROOM LARGE	1758	1222



KEY PLAN

## TYPICAL FLOOR PLAN TOWER ERICA

NO	TYPE	CONFIGURATION	SBA	CARPET AREA
1	EPIC	3.5 BEDROOM	2166	1511
2	VILLANELLE	3 BEDROOM LARGE	1760	1222
3	BALLAD	2 BEDROOM	1300	892
4	SONNET	3 BEDROOM	1602	1115
5	SONNET	3 BEDROOM	1601	1115
6	VILLANELLE	3 BEDROOM LARGE	1758	1222



KEY PLAN



## TYPICAL FLOOR PLAN TOWER PEONY

FLOORS - 2, 6, 10, 14, 18, 22

NO	TYPE	CONFIGURATION	SBA	CARPET AREA
1	EPIC	3.5 BEDROOM	2166	1511
2	VILLANELLE	3 BEDROOM LARGE	1796	1222
3	BALLAD	2 BEDROOM	1352	892
4	SONNET	3 BEDROOM	1644	1115
5	SONNET	3 BEDROOM	1643	1115
6	VILLANELLE	3 BEDROOM LARGE	1795	1222



KEY PLAN

## TYPICAL FLOOR PLAN TOWER ERICA

FLOORS - 2, 6, 10, 14, 18, 22

NO	TYPE	CONFIGURATION	SBA	CARPET AREA
1	EPIC	3.5 BEDROOM	2166	1511
2	VILLANELLE	3 BEDROOM LARGE	1796	1222
3	BALLAD	2 BEDROOM	1352	892
4	SONNET	3 BEDROOM	1644	1115
5	SONNET	3 BEDROOM	1643	1115
6	VILLANELLE	3 BEDROOM LARGE	1795	1222



KEY PLAN





### BALLAD HOME

2 BHK - 1300 SQFT

FOYER	4'5" WIDE
LIVING ROOM	21'1"X10'6"
DINING	12'1"X15'7"
KITCHEN & UTILITY	14'9"X8'
M.BEDROOM	15'1"X11'8"
M.TOILET	8'X5'1"
BEDROOM	12'6"X10'6"
COMMON TOILET	8'X5'1"
BALCONY-01	5'1"X10'6"
BALCONY -02	4'X5'



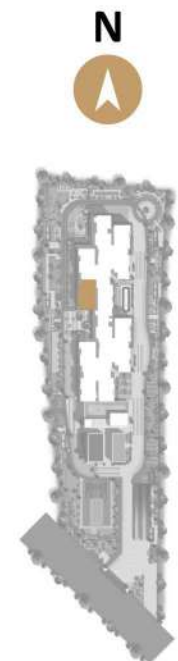
### SONNET HOME

3 BHK - 1601 SQFT

FOYER	4'4" WIDE
LIVING ROOM	21'X10'6"
DINING	12'1"X16'7"
KITCHEN & UTILITY	14'9"X8'
M.BEDROOM	13'X11'
WALK IN WARBDROBE	8'7"X5'7"
M.TOILET	8'X5'1"
BEDROOM-01	12'6"X10'6"
ATTACHED TOILET	8'X5'
BEDROOM-02	12'X10'
COMMON TOILET	8'X5'1"
BALCONY-01	5'1"X10'6"
BALCONY -02	4'X6'



KEY PLAN



KEY PLAN





### SONNET HOME

3 BHK - 1602 SQFT

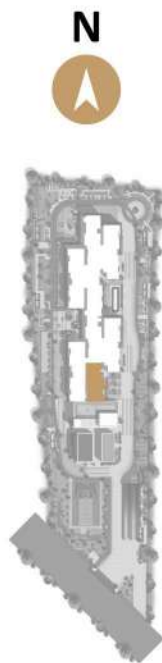
FOYER	4'4" WIDE
LIVING ROOM	21' X 10'6"
DINING	12'X16'7"
KITCHEN & UTILITY	14'9"X8'
M.BEDROOM	13'X11'
M.TOILET	8'X5'1"
BEDROOM-01	12'6"X10'6"
ATTACHED TOILET	8'X5'
BEDROOM-02	12'X10'
COMMON TOILET	8'X5'1"
BALCONY-01	5'1"X10'6"
BALCONY-02	4'X6'



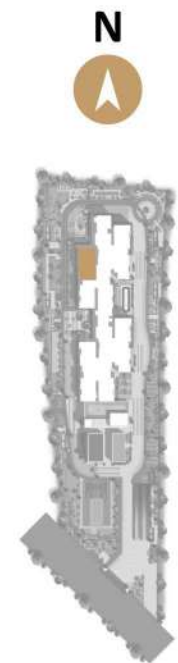
### VILLANELLE HOME

3 BHK - 1758 SQFT

FOYER	4'7" WIDE
LIVING ROOM	21'7" X 11'
DINING	12'X19'7"
KITCHEN & UTILITY	15'3"X8'
M.BEDROOM	14'11"X11'
WALK IN WARBDROBE	8'7"X5'7"
M.TOILET	8'X5'1"
BEDROOM-01	14'1"X11'
ATTACHED TOILET	8'X5'1"
BEDROOM-02	12'6"X10'6"
COMMON TOILET	8'X5'1"
BALCONY-01	5'9"X11'
BALCONY -02	4'X7'1"



KEY PLAN



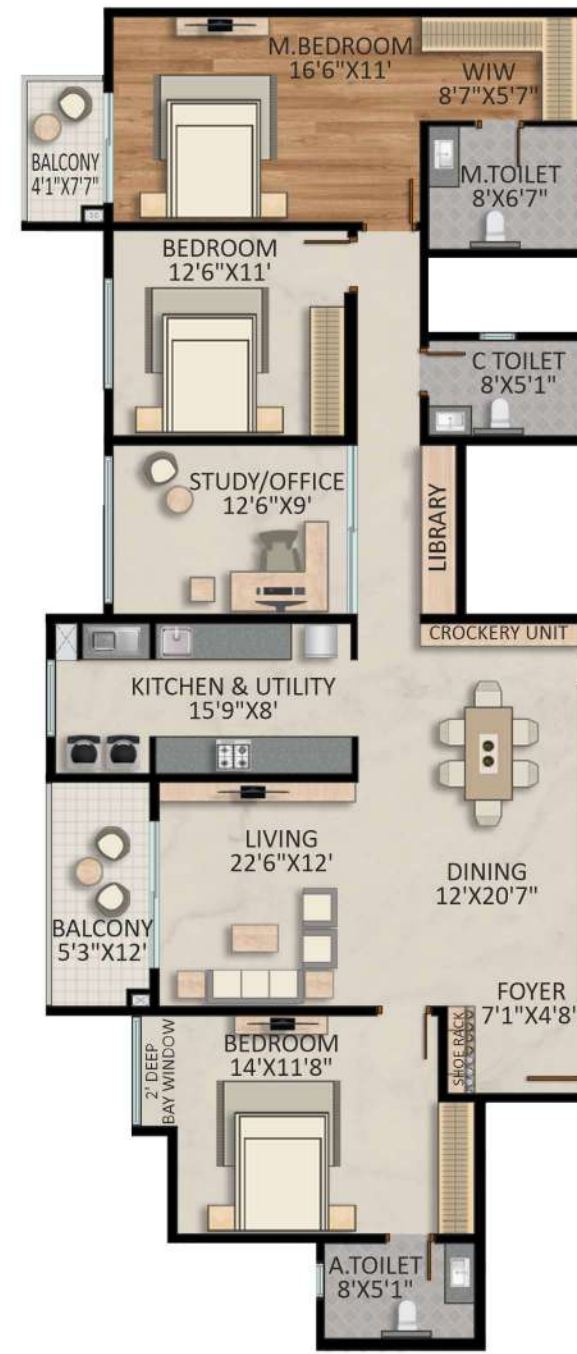




### VILLANELLE HOME

3 BHK - 1760 SQFT

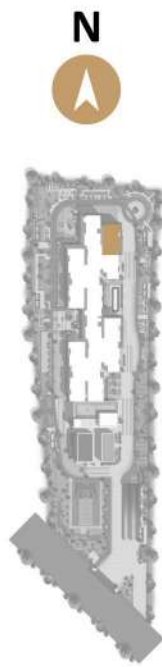
FOYER	4'7" WIDE
LIVING ROOM	21'7"X11'
DINING	12'X19'7"
KITCHEN & UTILITY	15'3"X8'
M.BEDROOM	14'11"X11'
WALK IN WARBDROBE	8'7"X5'7"
M.TOILET	8'X5'1"
BEDROOM-01	14'1"X11'
ATTACHED TOILET	8'X5'1"
BEDROOM-02	12'6"X10'6"
COMMON TOILET	8'X5'1"
BALCONY-01	5'9"X11'
BALCONY -02	4'X7'1"



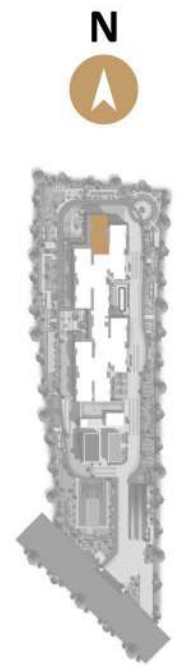
### EPIC HOME

3.5 BHK - 2166 SQFT

FOYER	7'1"X4'8"
LIVING ROOM	22'6"X12'
DINING	12'X20'7"
KITCHEN & UTILITY	15'9"X8'
M.BEDROOM	16'6"X11'
WALK IN WARBDROBE	8'7"X5'7"
M.TOILET	8'X6'7"
BEDROOM-01	14'X11'8"
ATTACHED TOILET	8'X5'1"
BEDROOM-02	12'6"X11'
COMMON TOILET	8'X5'1"
STUDY/OFFICE	12'6"X9'
BALCONY-01	5'3"X12'
BALCONY -02	4'1"X7'7"



KEY PLAN



KEY PLAN



---

THE CLUBHOUSE  
ELEVATED, EXCLUSIVE AND  
QUITE EXTRAORDINARY

---



THE LIFESTYLE



CLUBHOUSE  
GROUND FLOOR PLAN



CLUBHOUSE  
FIRST FLOOR PLAN



CLUBHOUSE  
SECOND FLOOR PLAN



CLUBHOUSE  
THIRD FLOOR PLAN





# THE DELIGHT IS IN THE DETAILS

Amenities We boast of amenities that cater to every lifestyle. Park East is a sanctuary for all ages to coexist and enrich one another, at our premium facilities.

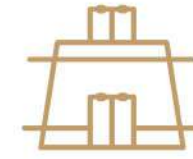
## LIFESTYLE HALLMARKS



Cycle Stand



Outdoor Party Zone



Garden Cricket Pitch



Skating Rink



Chit-chat Zone



Multipurpose Lawn for Yoga/Party/ Informal Café



Entrance Feature Wall with planting



Elders Zone



Dribble Court



Floor Games on EPDM/ stamped concrete



Supermarket Spill Over Zone



Visitor's Parking



Outdoor Work spaces



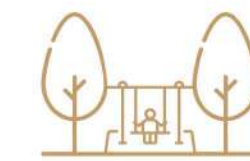
Informal Amphitheatre



Park under Rain Tree



Block Entry Pergola with seating



Tree Court with Swing Park



Pergola with Climbers Over Ramp



Seating under Accent trees



Neem Grove Court



Toddler's Play Area



Jogging/Walking Track



Pet Park



# THE DELIGHT IS IN THE DETAILS

## COMMON AMENITIES



Covered  
Badminton Court



Squash Court



Open work spaces



Steam /Sauna



Cycling +  
walking path



Community  
gathering spaces



Gymnasium



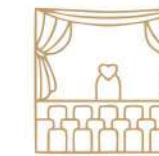
Table Tennis



Basketball Court



Kids play area



Party hall with  
pantry



Swimming pool



Yoga Deck



Pool Table



Creche



Home Theatre



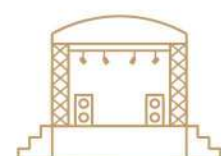
Guest Rooms



Mini soccer



Tennis court/  
Multipurpose court



Amphitheatre



Space for Library



Space for health care



Space for Retail store  
with ATM provision  
and launder mat.





RELAX & UNWIND TERRACE POOL  
FOR UNLIMITED VIEWS & JOY FULL MOMENTS

---

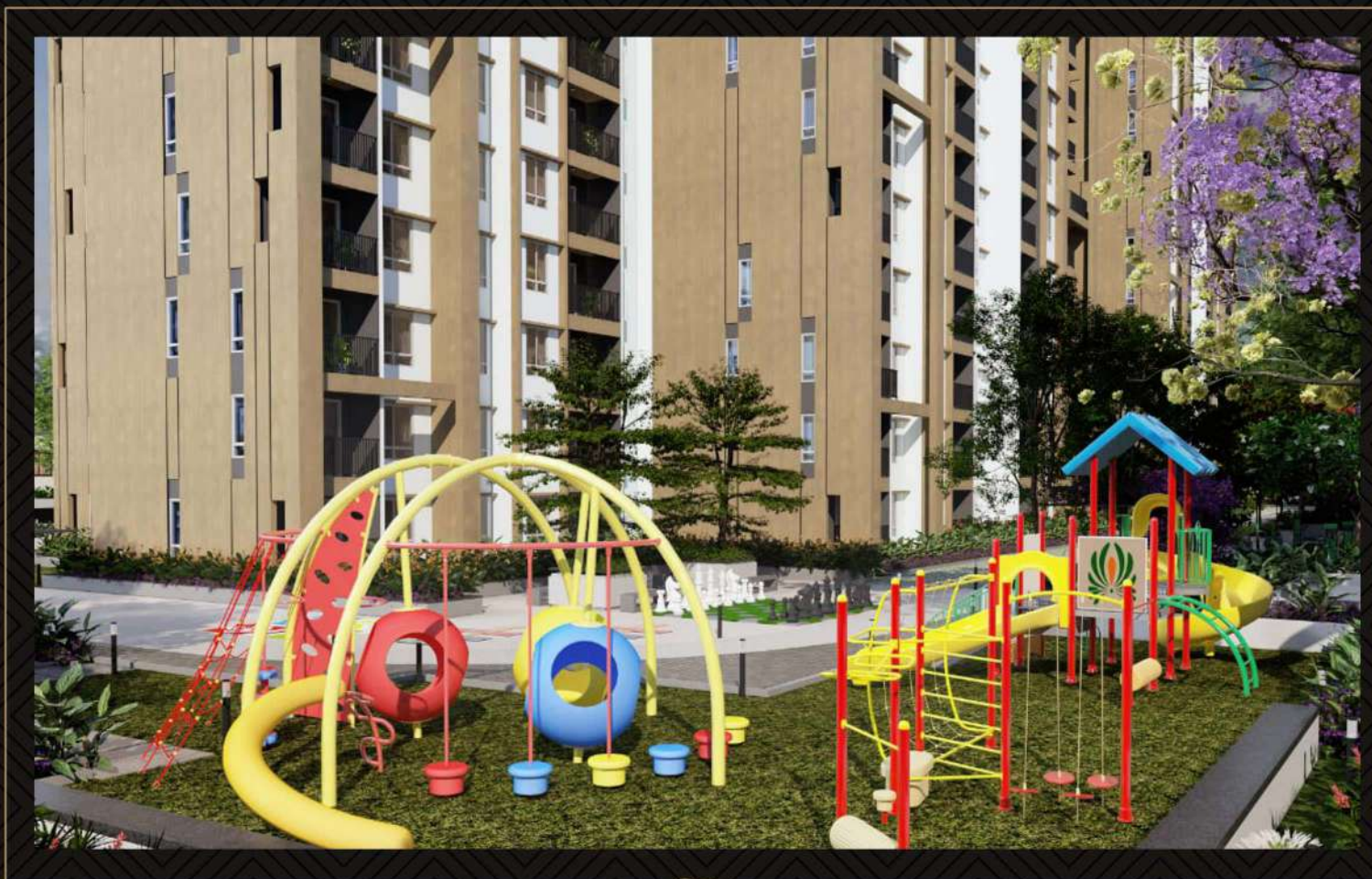
Sparkling green water invites you to take a dip. De-stress and rejuvenate in this pristine swimming pool. Let all the worries of the world wash away. It's time to have some aqua fun.



SWIMMING POOL  
SIT RELAX & GIVE THE ROUTINE  
A WELL-DESERVED BREAK



WALK WAYS  
PATHS OF GLORY TO MAINTAIN  
A HEALTHY BODY AND SOUL



KIDS PLAY AREA  
WORLD OF SMILES & ADVENTURE  
FOR THE SMALL & YOUNG



PATH WAYS  
AN EVENING STROLL TO  
MORNING WALK - YOU HAVE IT ALL!



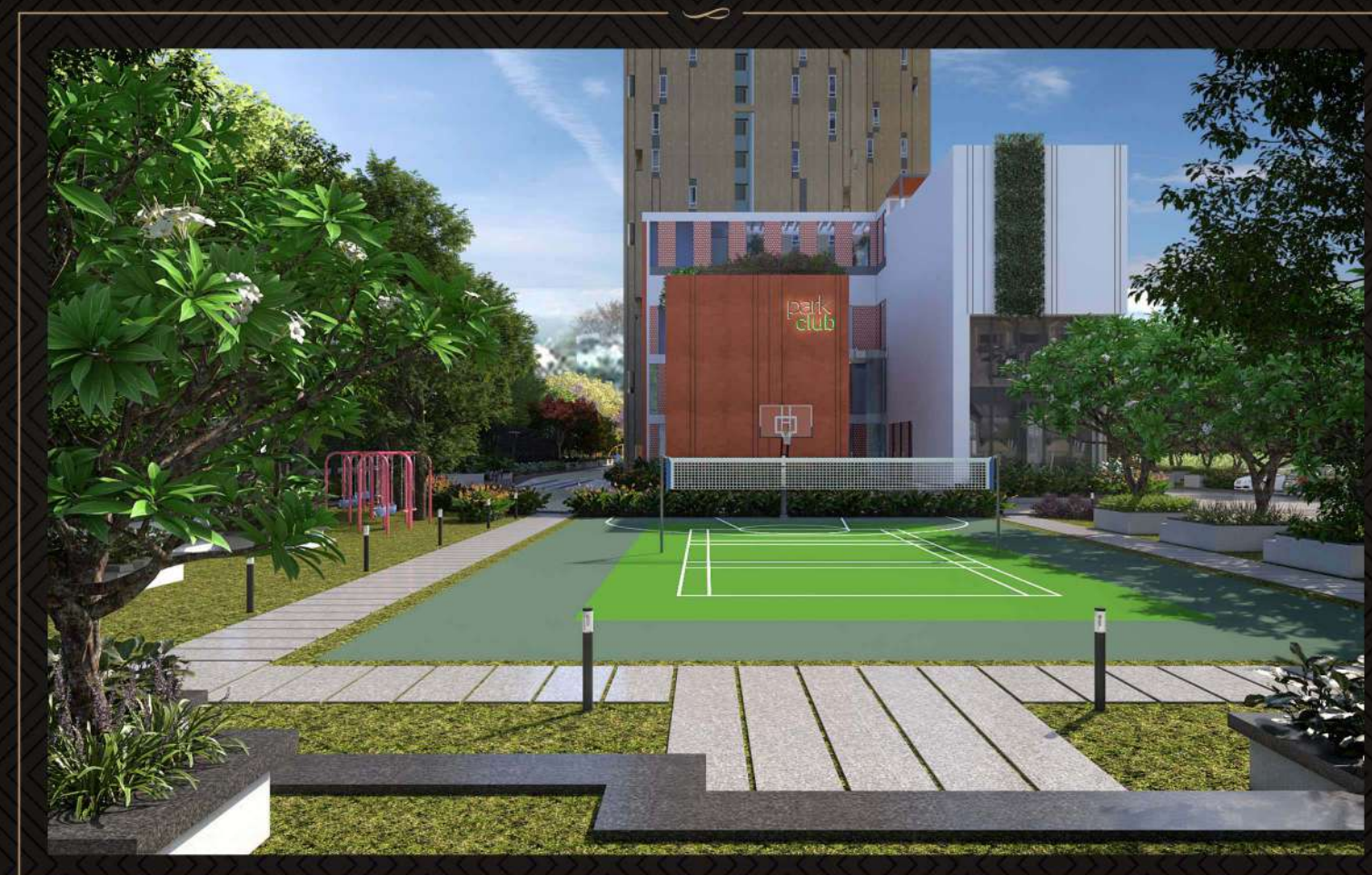
NET CRICKET

BAT FOR A HEALTHY BODY!  
PITCH IN SOME BEST SHOTS!



TENNIS COURT

LOVE ALL! TAKE ADVANTAGE!  
BURN DOWN THE CALORIES!



LAWNS

SHARE YOUR STORIES!  
NETWORK WITH YOUR FAMILY & FRIENDS!



CAFETERIA

DISCUSS & DEBATE!  
MAKE SOME NOISE OVER A COFFEE!



Your life is your story - and we aspire to be a part of it. Home isn't just the space you live in, it's your surroundings, the lifestyle you enjoy and the people you love.

Ruchira committed to delivering the best product and service we can and that means always going above and beyond your expectations, where extraordinary becomes the normality.

park  
east  
By Ruchira

THE RUCHIRA STANDARDS





# THE DELIGHT IS IN THE DETAILS

## QUALITY SPECIFICATIONS

### CIVIL

#### STRUCTURE:

Seismic resistant RCC structure using system form work with concrete shear walls in main building & RCC framed structure using concrete blocks for basements, club house & other amenities.

### ARCHITECTURE

#### DOORS

- Engineered wooden doors with veneer and laminate.
- **MAIN DOOR:** Door frame -Engineered Wood, height 8 feet with 40 mm flush shutter and finish- veneer and polish with bottom threshold and provided with Smart Door lock (Yale/ Godrej or equivalent).
- **INTERNAL DOORS:** Door Frame -Engineered Wood, height 8 feet with 38 mm flush shutter and laminate finish.
- **TOILET DOORS:**
  - + Door Frame -Engineered Wood, height 7 feet with 32 mm flush shutter . and laminate finish.
  - + Front and back Architrave for all doors.
  - + Hettich/ Hafele/ Europa/ Premium or Equivalent hardware's for all doors.
  - + Acoustic EPDM Gasket (For noise reduction) for all doors.

#### WINDOWS

2 track powder coated system aluminium windows.

#### FLOORING AND WALL CLADDING

- Superior quality vitrified tiles flooring and wall cladding.
- **LIVING, DINING, KITCHEN & BEDROOMS:** Vitrified tiles flooring of size- 800 x 800 / 800 x 1600 / 600 x 1200.
- **MASTER BEDROOM:** Laminated wooden flooring.
- **BATHROOM:** Floor – Anti-skid vitrified tiles of size- 600 x 600(2' x 2').
- **WALLS:** Vitrified tiles of size -600 x 1200 (2' x 4').
- **BALCONY:** Anti-skid vitrified tiles.

#### INTERNAL RAILINGS

Balcony - MS Railings with enamel paint finish.

#### PAINT

- **INTERNAL WALLS :** Wall putty/POP punning with Primer and Premium emulsion paint.
- **EXTERNAL WALLS:** Weather proof exterior grade paint -Apex Ultima or equivalent.
- **CEILING:** Finished with oil bound distemper.

#### FALSE CEILING

2' x 2' Grid tiles using Calcium Silicate board in all bathrooms

### PLUMBING, ELECTRICAL & SERVICES

#### CP AND SANITARY FITTINGS AND FIXTURES

- Grohe / Jaguar / Kohler or equivalent water efficient CP Fixtures.
- American Standard/ Grohe or equivalent Sanitaryware.
- Anti-bacterial coated soft close seat covers for EWC.
- Branded SS sink one-piece in Utility area.

#### ELECTRICAL FITTINGS

- Schneider/ Legrand/ Anchor Roma switches or equivalent and partially home automation by Schneider or equivalent.
- Provision of Telephone + Data cabling
- Schneider or equivalent make distribution Boards.
- RCCB incomer with overload & earth leakage protection.
- Electrical cables of ISI brands Havells/ Polycab/ KEI or equivalent.

#### ELECTRICAL POINTS

- Provision of electrical points for Refrigerator, Hob, Chimney, Washing machine, Water purifier with 2 additional plug points.
- TV point in living room and in all bedrooms (except in the guest bedroom of 3BHK)
- Electrical point for Geyser & Exhaust fan in toilets.
- AC point for all bedrooms and living & dining area

#### GRID POWER AND BACK UP POWER

- EB Power - 2 BHK - 4 KW, 3 BHK - 5KW
- DG Power backup - 2 BHK - 1 KW, 3 BHK Bll .5 KW & common areas 100% back up for lighting circuits, lifts and utilities.

#### SERVICES

- Piped natural gas (PNG) provision
- Water treatment plant
- Sewage treatment plant
- Organic waste convertor

#### ELEVATORS

- Three elevators per core -10 / 13 passenger capacity Mitsubishi/ Toshiba/ Thyssenkrupp
- One service elevator per core Bll 5 passenger capacity Mitsubishi/ Toshiba/ Thyssenkrupp

#### SAFETY AND SECURITY

- Common area surveillance.
- Fire rated doors at fire escape staircases at required levels
- Fully equipped fire fighting system as per fire norms.

### GREEN FEATURES

#### WATER CONSERVATION

- Dual piping system & Dual flush system for sanitary.
- All landscape maintained through recycled water.
- Water efficient fixtures.
- Rain water harvesting.
- Ground water recharge.

#### ENERGY CONSERVATION

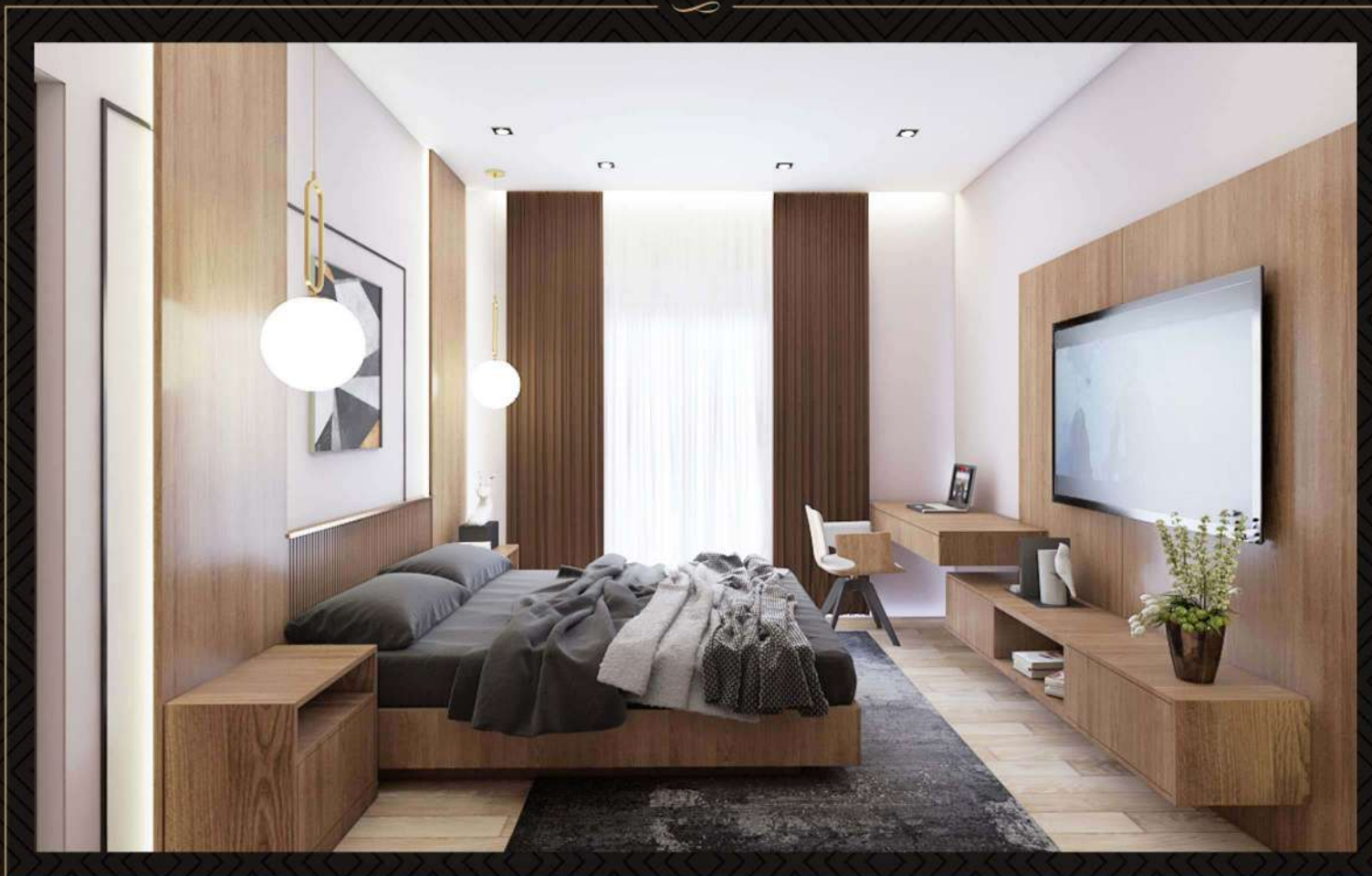
- Solar water provision for select units.
- Partial Solar power provision for common area lighting.
- Energy efficient lights in common areas.
- Timer adjusted street lights.

#### SOLID WASTE MANAGEMENT

- Segregation at source.
- Organic waste convertor room.



SPACIOUS BEDROOM  
PRIVATE, INTIMATE & SERENE!  
MAKE A STATEMENT!



LUXURY LIVING ROOM  
STELLAR & SPACIOUS! DESIGNED &  
DEVELOPED TO DEFINE YOUR LIFESTYLE!



FOYER AREA  
INTRIGUING & INVITING!  
CONNECT YOUR HOME WITH A LUXURIOUS FOYER!



DINING AREA  
TASTE THE TIMELESS DESIGN  
THAT LEADS TO GLORIOUS CONVERSATIONS



The search process for savvy homebuyers is more thorough, and they demand the finest standards without sacrificing their necessities. Our aim is to create an ambiance of bliss and serenity for them, which is why we, at Ruchira, are driven towards building spaces that enunciate these very factors. Our experience and exuberance span many high-rise structures that dot the skyline of not only Bengaluru but also across the country.



Corporate Office Address

Site No. 12/1to4, 2nd Floor, Naidu Layout,  
Agastya Commercial Spaces, Behind Royal Mart Super Market,  
(Happy Valley) Whitefield, Bengaluru, Karnataka - 560 066

Site Office Address

Kannamangala Main Rd, Ardendale, Whitefield- Hoskote Road,  
Kannamangala, Bengaluru, Karnataka - 560 067

For Sales & Enquiry

**+91 78295 73333**

[sales@ruchiraprojects.com](mailto:sales@ruchiraprojects.com) | [www.ruchiraprojects.com](http://www.ruchiraprojects.com)



Location



Website



Project Updates



Walkthrough

**OUR ASSOCIATES**

We are aware of the industry's paradigm shift and want to fill the void with our cutting-edge designs. Our vessel is state-of-the-art and was created expressly to meet this generation's speed. Whether it's your house, business, or other commercial entity our team of architects, art professionals, and designers showcase our signature and uphold our values...need we say more?



Architect & Engineer

URBAN FRAME PVT LTD  
Bangalore - 560 052



Landscape Designer

DHRUVA  
LANDSCAPE ARCHITECTS  
Bangalore - 560 070



Structural Consultant

AEC NEXGEN  
CONSULTANCY LLP  
Bengaluru - 560 092



MEP Consultant

HMN TECHCONSULTANTS  
PVT LTD  
Bengaluru - 560 082

**OTHER RUCHIRA CREATIONS**



RUCHIRA LILIUM - KADUGODI



RUCHIRA AARNA - WHITEFIELD



RUCHIRA IRIS - WHITEFIELD



RUCHIRA LV TOWERS - WHITEFIELD



[www.ruchiraprojects.com](http://www.ruchiraprojects.com)



#### DISCLAIMER

By using or accessing the brochure, you agree with the disclaimer without any qualification or limitation. The Company/ Firm reserves the right to terminate, revoke, modify, alter, add and delete any one or more of the terms and conditions outlined in the brochure. The Company/ Firm shall be under no obligation to notify the user of the amendment to the terms and conditions and the user shall be bound by such amended terms and conditions.

Computer generated images, walkthroughs and render images used on this brochure are the artist's impression and are an indicative of the actual designs. The imagery used on the brochure may not represent actuals or may be indicative of style only.

The information on this brochure is presented as a general information and no representation or warranty is expressly or impliedly given as to its accuracy, completeness or correctness. It does not constitute part of a legal offer or contract. This brochure may unintentionally include inaccuracies or errors with respect to the description of a plot/ flat size, site plan, floor plan, a rendering, a photo, elevation, prices, taxes, adjacent properties, amenities, design guidelines, completion dates, features, zoning, buyer incentives etc. Further the actual design / construction may vary in fit and finish from the one displayed in the information and material displayed on this brochure.

The user must verify all the details and specifications, including but not limited to the area, amenities, specifications, services, terms of sales, payments and all other relevant terms independently with our sales/ marketing team prior to concluding any decision for buying any unit in any of our projects/ developments.

Not with standing anything, in no event shall the Company/ Firm, their Promoters, Partners/ Directors, Employees and Agents be liable to the visitor/ user for any or all damages, losses and causes of action (including but not limited to negligence), errors, injury, whether direct, indirect, consequential or incidental, suffered or incurred by any person/s or due to any use and/or inability to use this brochure or information, action taken or abstained through this brochure. While enough care is taken by the Company/ Firm to ensure that information in the brochure are up to date, accurate and correct, the readers/ users are requested to make their independent enquiry before relying upon the same.

**CREDAI**  
BENGALURU

Brochure Design By

**CE** CREATIVE ETHICS.COM  
+91 90329 32953